



High Street, TW12

£1,500,000

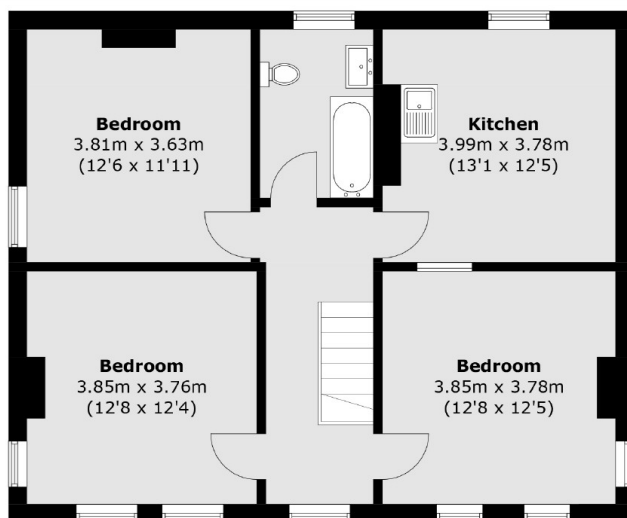
This prominent, detached, four bedroom house has been in one family for around 100 years. Planning permission has been granted for a five bedroom property, a blank canvas to create the forever home. To top it off the views over Bushy Park are magnificent!

Located on Hampton Hill High Street, everything you need is on your doorstep - local shops, restaurants and cafés, bus routes, Fulwell station and Bushy Park.

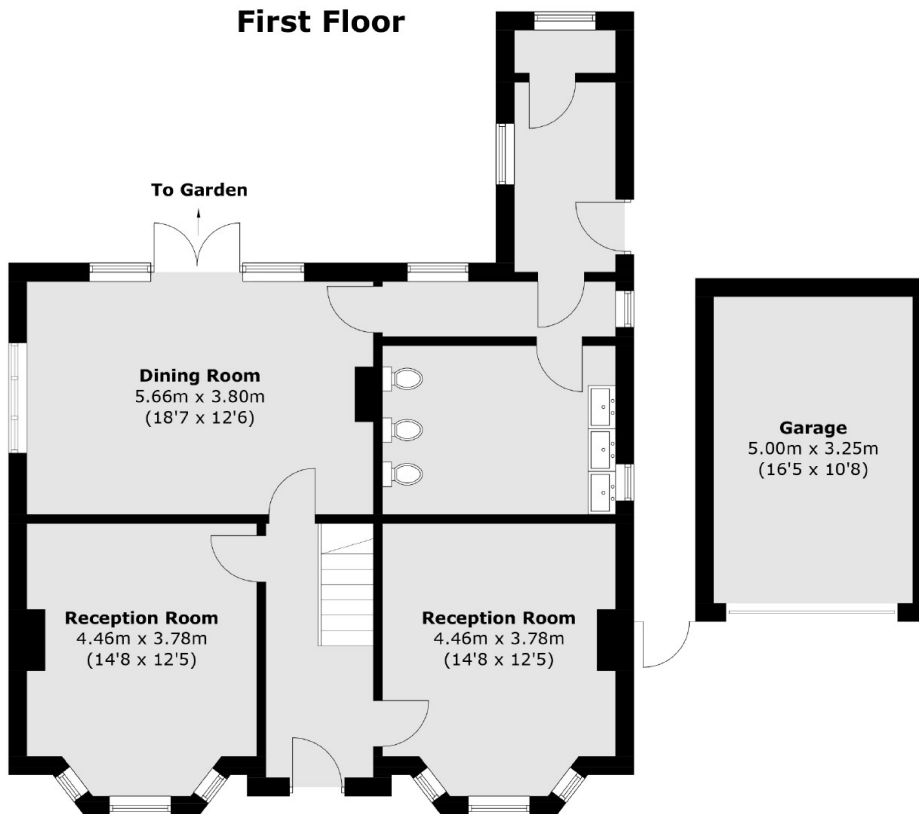
Features

- Detached
- Victorian
- Views Over Bushy Park
- In Need Of Modernisation
- Large Garden
- No Onward Chain

High Street, Hampton, TW12



First Floor



Ground Floor

Total area (approx.): 159.4 sq. m (1,715.7 sq. ft)

Garage (approx.): 16.2 sq. m (174.4 sq. ft)