



Nene Gardens, TW13

£275,000

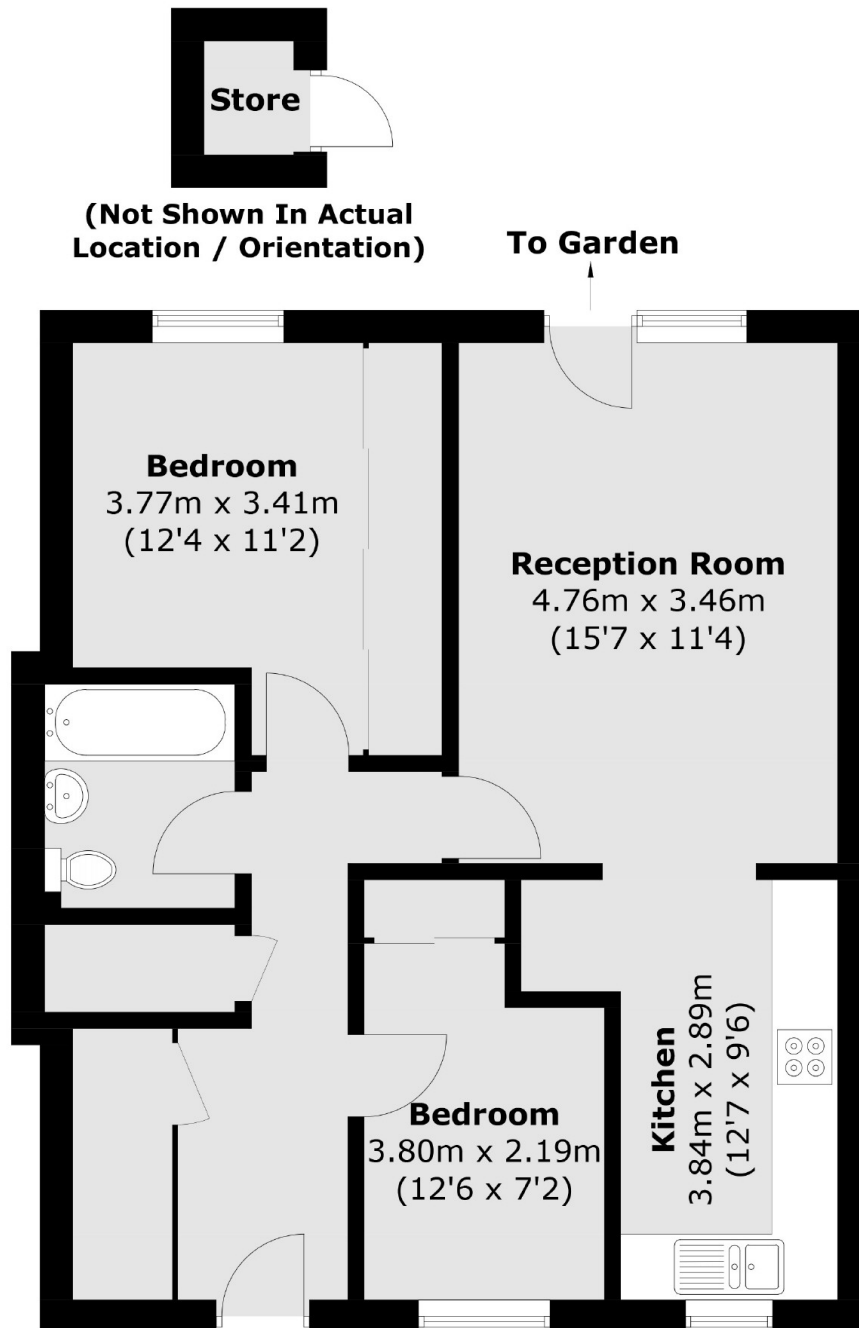
This is a two bedroom ground floor maisonette coming with a private garden and no onward chain. We are expecting it to be snapped up in no time so please do let us know when you are free to view!

Set in a quiet residential close with ample parking just in front of the house, located near the borders of Hanworth and Hampton with handy transport links and great local schools just around the corner.

Features

- Maisonette
- Two Bedrooms
- Ground Floor
- Private Garden
- No Onward Chain
- Residential Location

Nene Gardens, Feltham, TW13



Total area (approx.): 62.1 sq. m (668.4 sq. ft)
Store area (approx.): 1.0 sq. m (10.8 sq. ft)