

Ormond Crescent
Hampton, TW12

Dexters



About the property

This detached five bedroom, three bathroom house has been immaculately designed by the current owners leaving a quality of finish and a layout that needs to be seen to be truly appreciated.

This house has an incredible open plan kitchen and diner which leads onto a further reception room, utility room and two double bedrooms on the ground floor. Upstairs has a principal suite with walk-in wardrobe and en suite bathroom as well as two more double bedrooms and

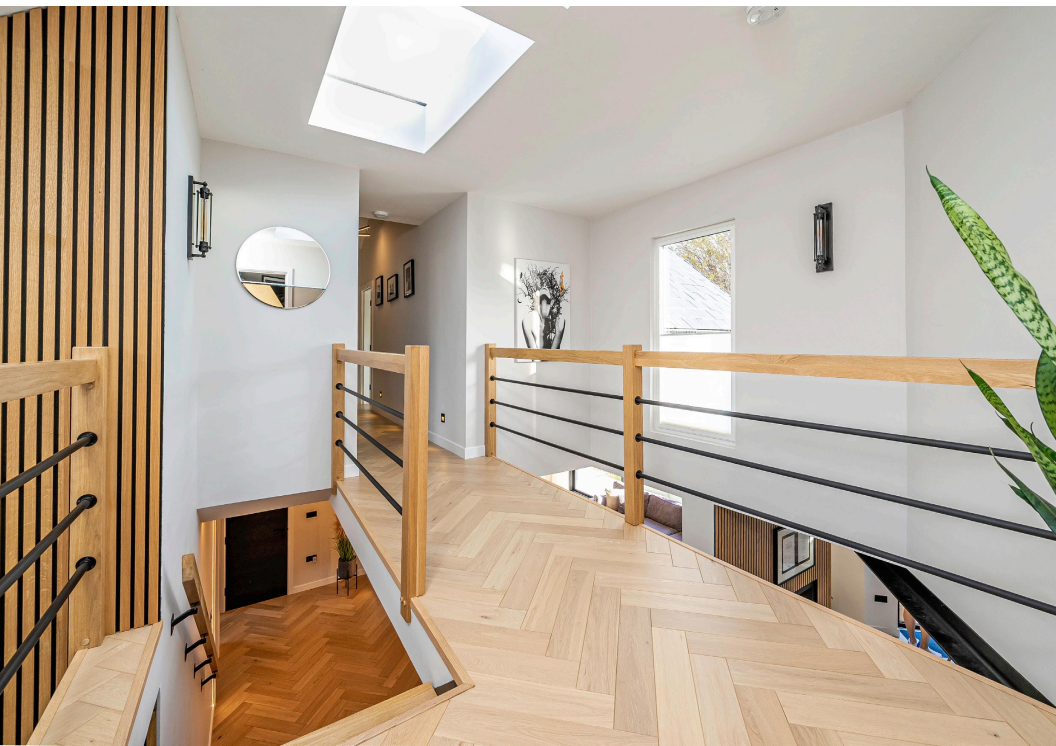
family bathroom. The beautiful vaulted ceilings and impressive modern take on a galleried landing make this home uniquely special.

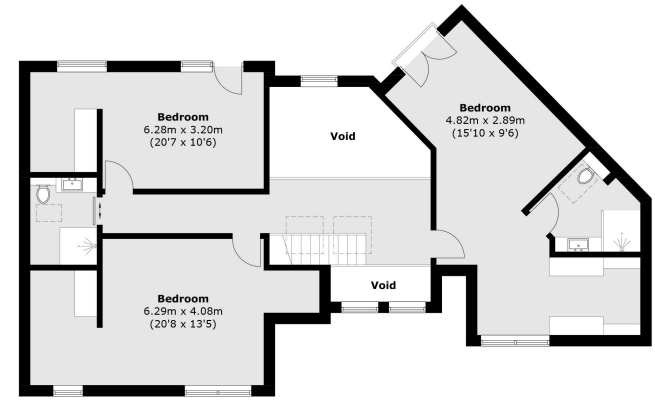
Located in the prestigious Ormond Crescent, this property has great local transport links including Hampton train station. A popular location for families who are looking to benefit from our outstanding choice of local state and private schools.

Key features

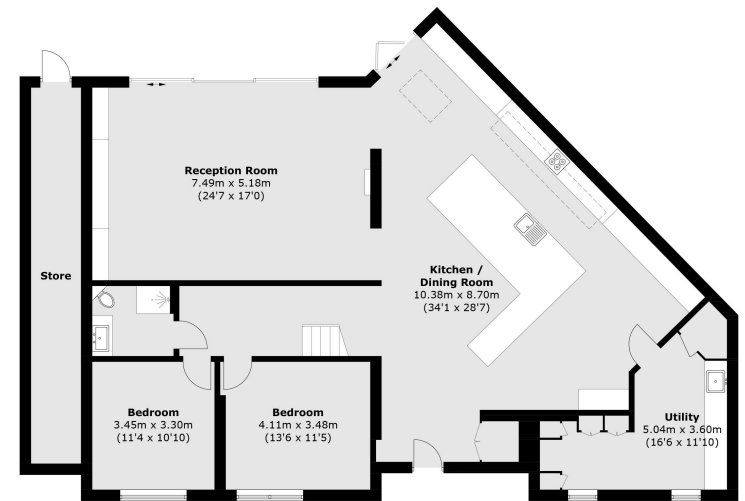
- Detached
- Open Plan Layout
- Five Bedrooms
- Three Bathrooms
- Off-Street Parking
- Landscaped Garden







First Floor



Ground Floor

TOTAL APPROX. FLOOR AREA 2,884.7 SQ. FT (268 SQ. M)
 STORE APPROX. 148.5 SQ. FT (13.8 SQ. M)

Energy Rating: D. We aim to make our particulars both accurate and reliable. However they are not guaranteed; nor do they form part of an offer or contract. If you require clarification on any points then please contact us, especially if you're traveling some distance to view. Please note that appliances and heating systems have not been tested and therefore no warranties can be given as to their good working order.



Dexters Hampton
93 Station Road,
London, TW12 2BD
020 8255 7777

Dexters