



Summer Avenue, KT8

£999,950



A three bedroom, semi-detached family home offering scope to extend and modernise set on this private road.

Accommodation is made up of entrance hall, bay fronted living room, second reception room with patio doors to garden and kitchen. Upstairs there are two double bedrooms, a further single bedroom, family bathroom and separate W.C. To the front there is a driveway leading to garage. To the rear the west facing garden, measures approx 100ft and leads onto resident's meadowland known as 'The Willow the Wisp' with slip way and access to The Ember.

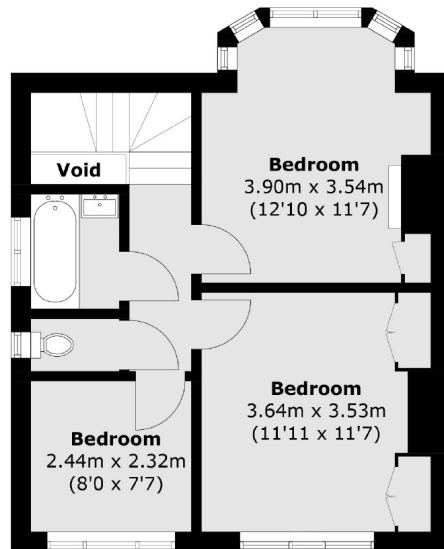
Summer Avenue is a quiet cul-de-sac located off Summer Road within a short walk of East Molesey village.

Features

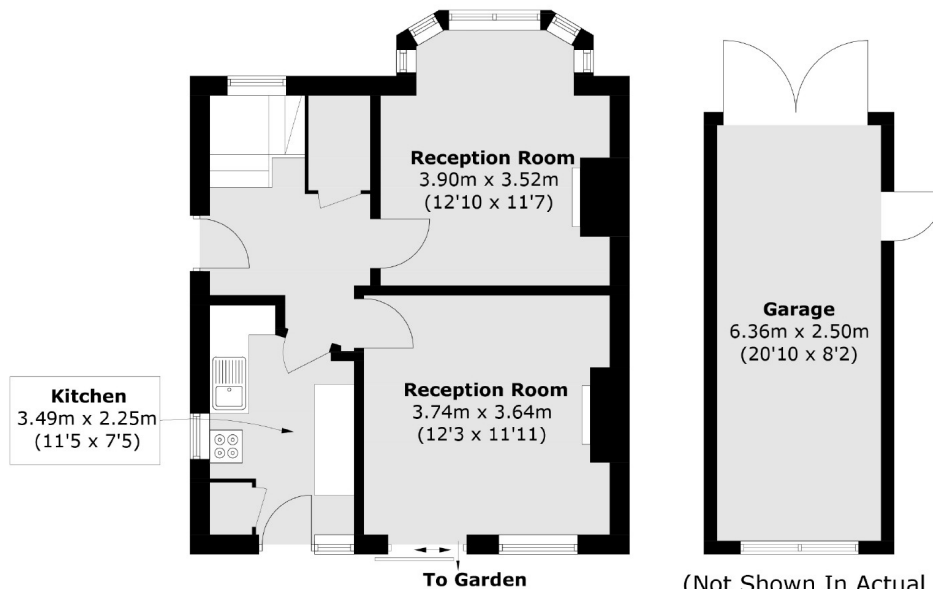
Family Home
Scope to Modernise
Quiet cul-de-sac
100ft Garden
Resident's Meadow
River Access



Summer Avenue, East Molesey, KT8



First Floor



Ground Floor

(Not Shown In Actual Location / Orientation)

Total area (approx.): 86 sq. m (925.7 sq. ft) (Excluding Void)

Garage area (approx.): 15.9 sq. m (171.1 sq. ft)

Contact

To arrange a viewing call our office on the number below or visit our website.



Energy Rating: . We aim to make our particulars both accurate and reliable. However they are not guaranteed; nor do they form part of an offer or contract. If you require clarification on any points then please contact us, especially if you're traveling some distance to view. Please note that appliances and heating systems have not been tested and therefore no warranties can be given as to their good working order.