



Westbourne Road, TW13

£449,950

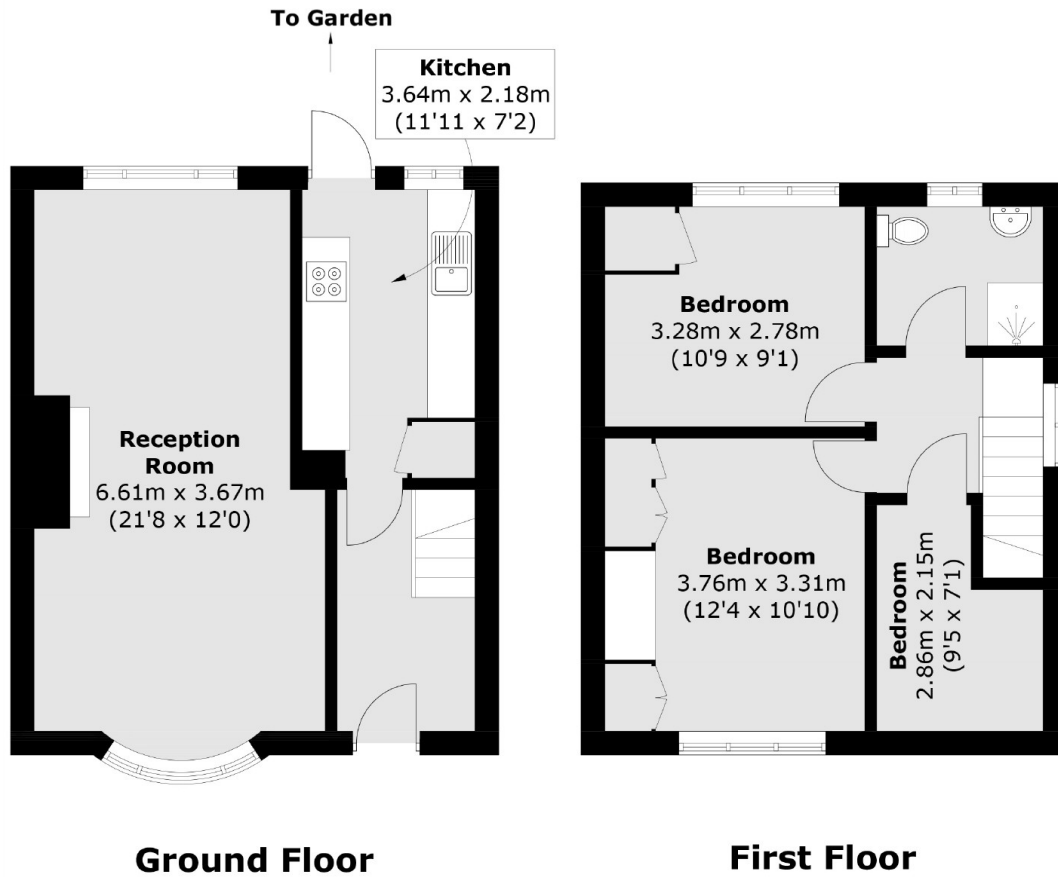
We are massive fans of this three bedroom semi-detached house set on a corner plot making it ripe to grow with the family. Also coming with the benefit of off-street parking please do drop us a call to view.

Westbourne Road is great for a commuter needing the A316. With local shops, Feltham Station and many convenient bus routes, this property isn't going to be around for long!

Features

- Three Bedrooms
- Semi-Detached
- Off-Street Parking
- Private Garden
- Scope To Extend (STPP)
- Corner Plot

Westbourne Road, Feltham, TW13



Total area (approx.): 75.5 sq. m (812.6 sq. ft)