



Castle Way, TW13

£525,000

This is a charming, two double bedroom cottage - full of character and coming with no onward chain. We love the exposed beams, homely feel, generous loft space and can't wait to show you.

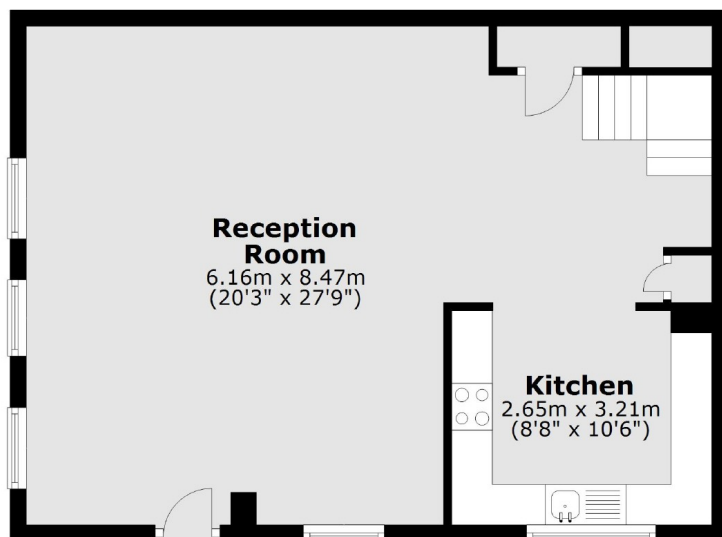
Tudor Court is an impressive development set on the prestigious Hanworth Park Estate, an area once used by King Henry VIII as a hunting lodge. Surrounded by history this property feels like a step back in time.

Features

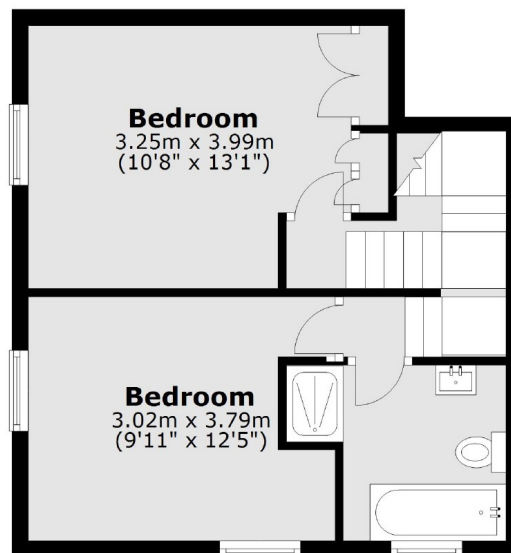
- Two Double Bedrooms
- Grade II Listed Development
- Private Garden
- Wider Landscaped Gardens
- Secluded Location
- No Onward Chain

Castle Way, Hanworth, TW13

Ground Floor



First Floor



Total area: approx. 88.4 sq. metres (951.9 sq. feet)