



## Wensleydale Gardens, TW12

£965,000

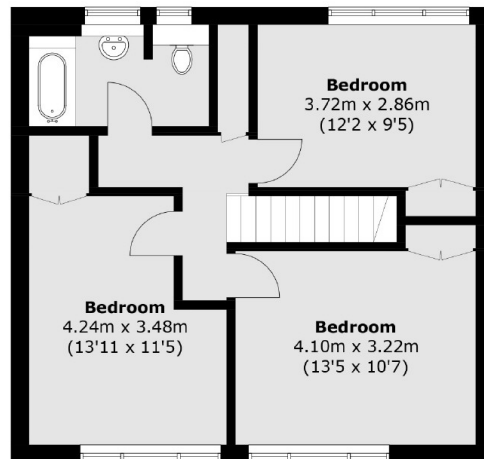
This is a detached three bedroom house which is perfect for both downsizers and families looking to live in a sought after part of Hampton Village. Neatly nestled away, privacy with a central location make this the perfect home. It also comes with the benefit of no onward chain!

Wensleydale Gardens is a quiet cul de sac running parallel to Carlisle Park. This coveted address is moments from Hampton Village, excellent schools, Hampton Train Station, Shops and Cafés, the River Thames and Bushy Park.

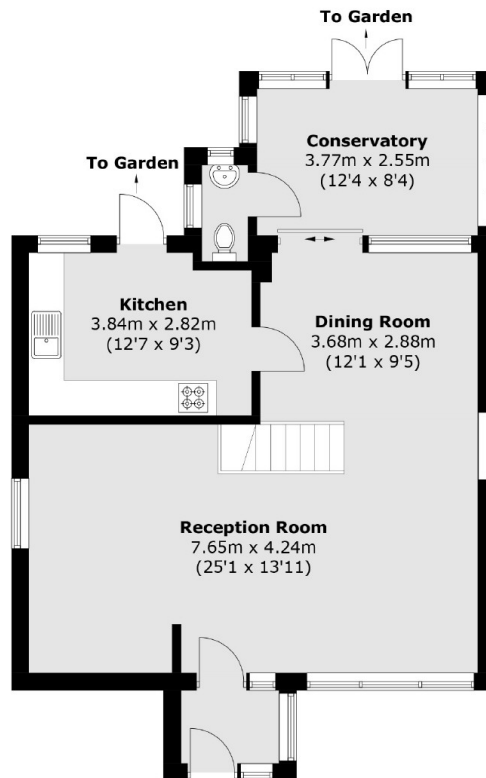
### Features

- Detached
- Three Bedrooms
- Off Street Parking
- No Onward Chain
- Private Garden
- Conservatory

# Wensleydale Gardens, Hampton, TW12



**First Floor**



**Ground Floor**

Total area (approx.): 124.4 sq. m (1,339.0 sq. ft)