



Danesbury Road, TW13

£475,000

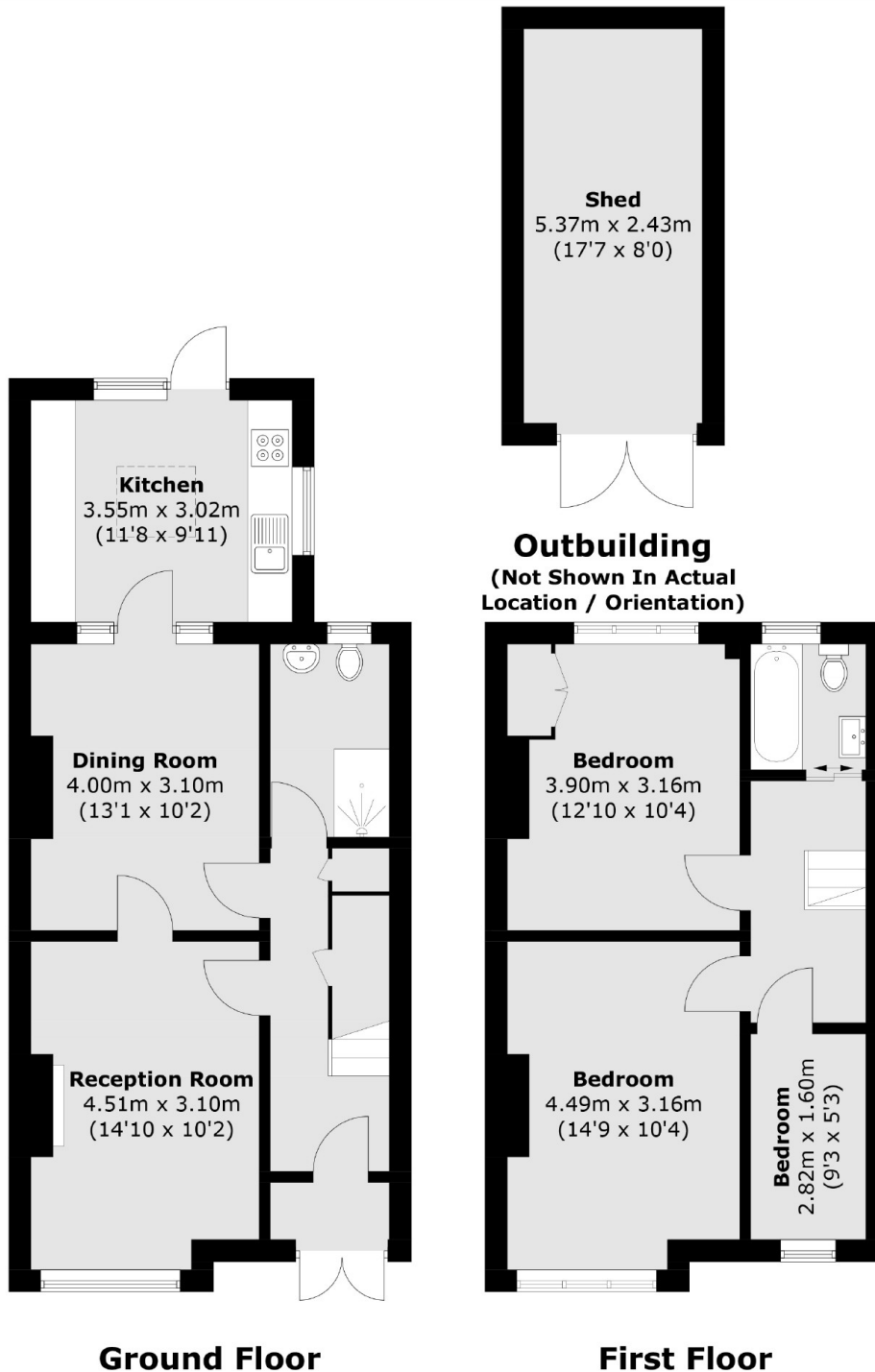
In need of modernisation we are big fans of this three bedroom Victorian house which has been in the family for a number of years. Having had probate granted, it comes with the benefit of no onward chain.

Nestled amongst a quiet grid of residential streets, Danesbury Road is only a short walk away from excellent transport links, high street shops and schools.

Features

- Victorian House
- Three Bedrooms
- Rear Garden
- Scope to Extend
- Close To Station
- Period Features

Danesbury Road, Feltham, TW13



Total area (approx.): 92.9 sq. m (1,000.0 sq. ft)
Outbuilding (approx.): 13.3 sq. m (143.2 sq. ft)