



Wolsey Road, TW16

£2,400 Per calendar month

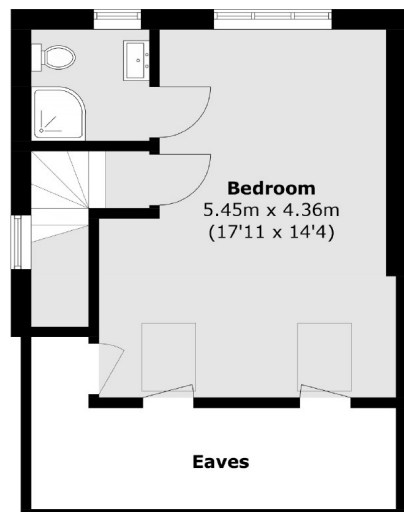
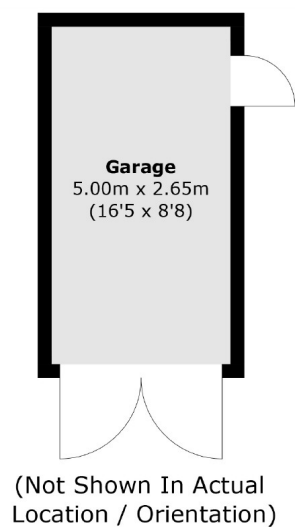
A brand new, fully renovated four bedroom family home finished to a high standard throughout offering a spacious reception room, separate eat-in kitchen and a private rear garden.

Wolsey Road is close to Sunbury Station, local schools and Sunbury Cross with its mix of convenience shops and cafés including Marks and Spencer and The Gym.

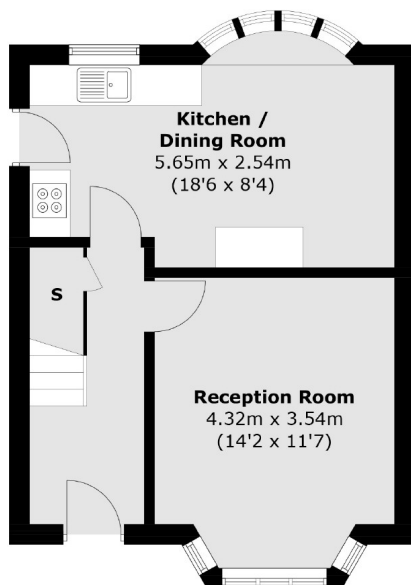
Features

Four Bedrooms
Large Driveway
Contemporary Bathroom
High Spec Throughout
Fully Equipped Kitchen
Modern En Suite

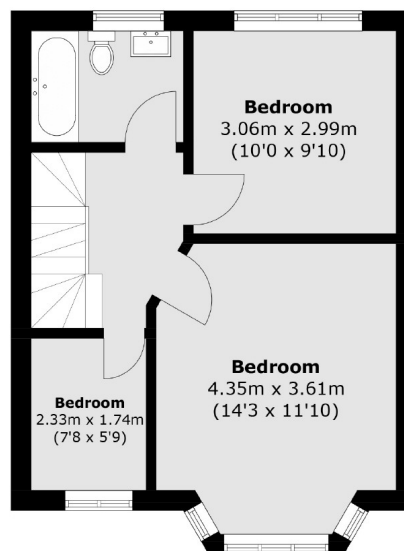
Wolsey Road, Sunbury-On-Thames, TW16



Second Floor



Ground Floor



First Floor

Total area (approx.): 104.1 sq. m (1,120.4 sq. ft)
Garage (approx.): 13.2 sq. m (142.0 sq. ft)

Contact

To arrange a viewing call our office on the number below or visit our website.



Energy Rating: D. We aim to make our particulars both accurate and reliable. However they are not guaranteed; nor do they form part of an offer or contract. If you require clarification on any points then please contact us, especially if you're traveling some distance to view. Please note that appliances and heating systems have not been tested and therefore no warranties can be given as to their good working order.