



Cambridge Road, TW12

£1,199,950

Dexters



Cambridge Road, TW12

What an incredible house! This has the most impressive configuration that we have seen for a long time. A four bedroom semi-detached 1930s build with a beautifully landscaped garden that is designed to impress.

Downstairs the house is made up of a pretty front reception room and an open-plan kitchen/diner that has been architecturally re-imagined to create that wow space that you are looking for.

With three bedrooms and family bathroom on the first floor, the loft has been converted to create an additional fourth bedroom and en suite bathroom.

The garden is around 80ft in length and cleverly zoned with three distinctive areas including seating, a pretty water feature and garden room which is wired and perfectly set up to work from home.

Cambridge Road is a popular residential road perfect for families. The park is at the end of the road, local shops, Waitrose and Hampton Station with its services into London Waterloo are nearby.

Features

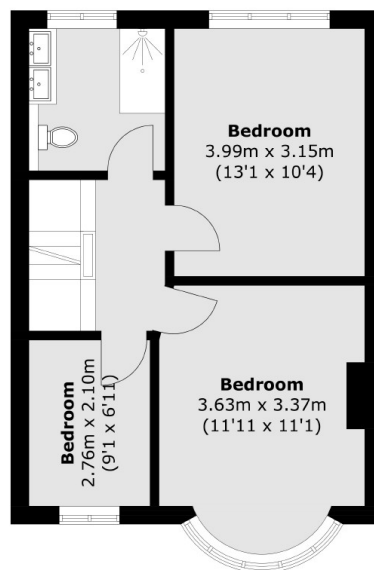
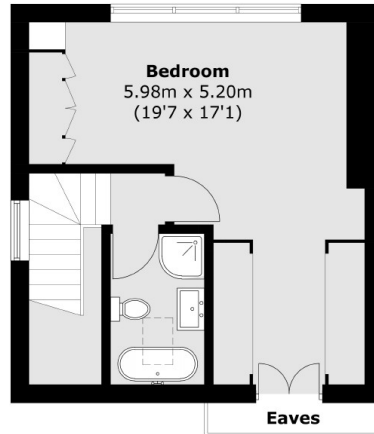
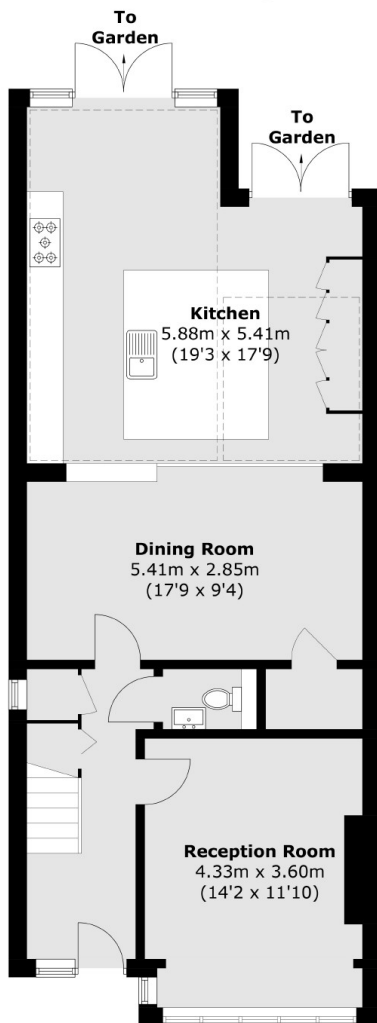
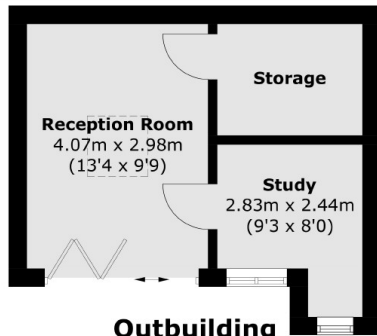
- Semi-Detached
- Four Bedrooms
- Stunning Rear Extension
- Landscaped Garden
- Home Office
- No Onward Chain







Cambridge Road, Hampton, TW12



Total area (approx.): 155.5 sq. m (1,673.8 sq. ft)
Outbuilding (approx.): 23.6 sq. m (254.0 sq. ft)