



Lansbury Avenue, TW14

£2,295 Per calendar month

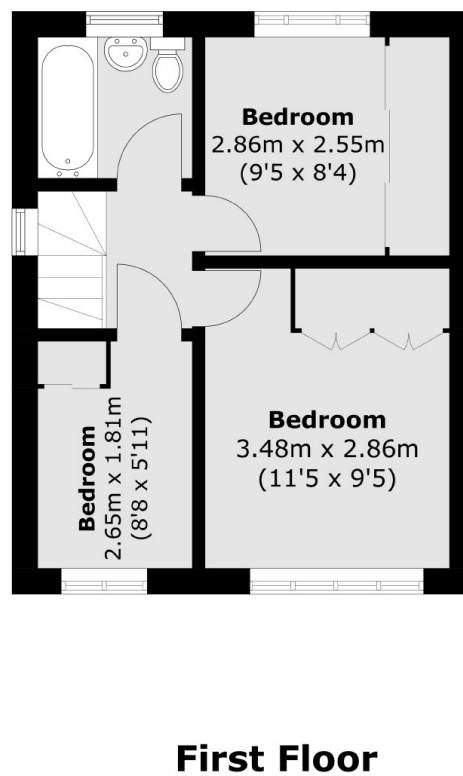
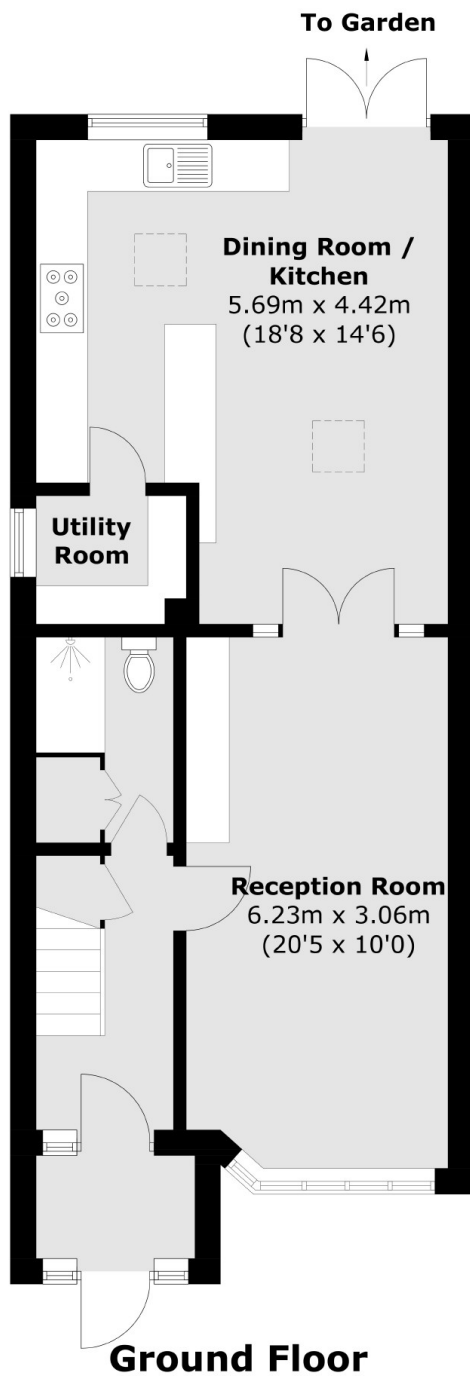
This is a three bedroom family home that ticks all of the boxes! Having been extended it offers plenty of space with an open plan kitchen/diner, utility room, two bathroom and off street parking.

Lansbury Avenue is a quiet residential road located 1.5 miles from Hatton Cross tube station and in the catchment for fantastic schools.

Features

- Three Bedrooms
- Utility Room
- Underfloor Heating In Kitchen
- Two Bathrooms
- Large Rear Garden
- Driveway

Lansbury Avenue, Feltham, TW14



Total area (approx.): 89.4 sq. m (962.3 sq. ft)