



Station Road, TW12

£369,950

In need of modernisation is this two bedroom, two bathroom end of terraced cottage. It is absolutely charming and makes an intriguing home - we can't wait to show you!

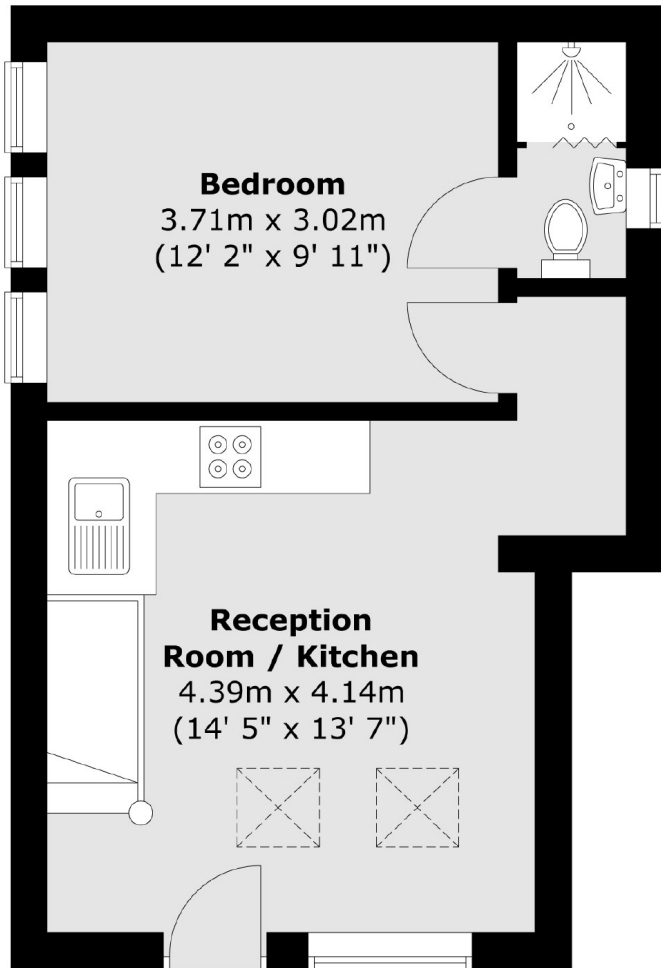
Situated just off Station Road close to local shops and the train station. Bushy Park and Hampton Open Air Pool are within a short walk.

Features

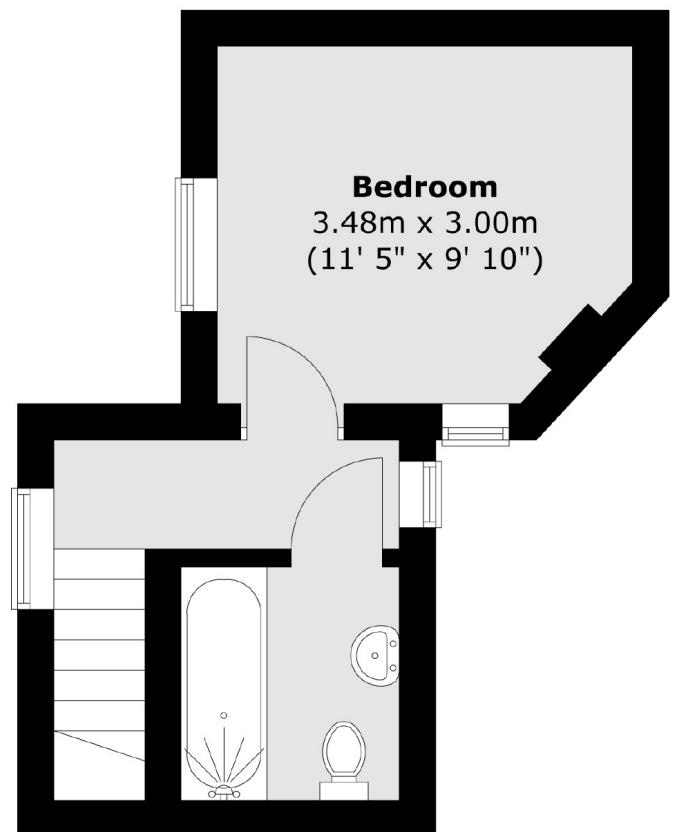
- Two Bedrooms
- End Of Terrace
- Patio Garden
- Open Plan Kitchen/Diner
- Central Village Location
- No Onward Chain

Station Road, Hampton, TW12

Ground Floor



First Floor



Total area (approx.) : 53 sq. m (571 sq. ft)