



Bel Lane, TW13

£325,000

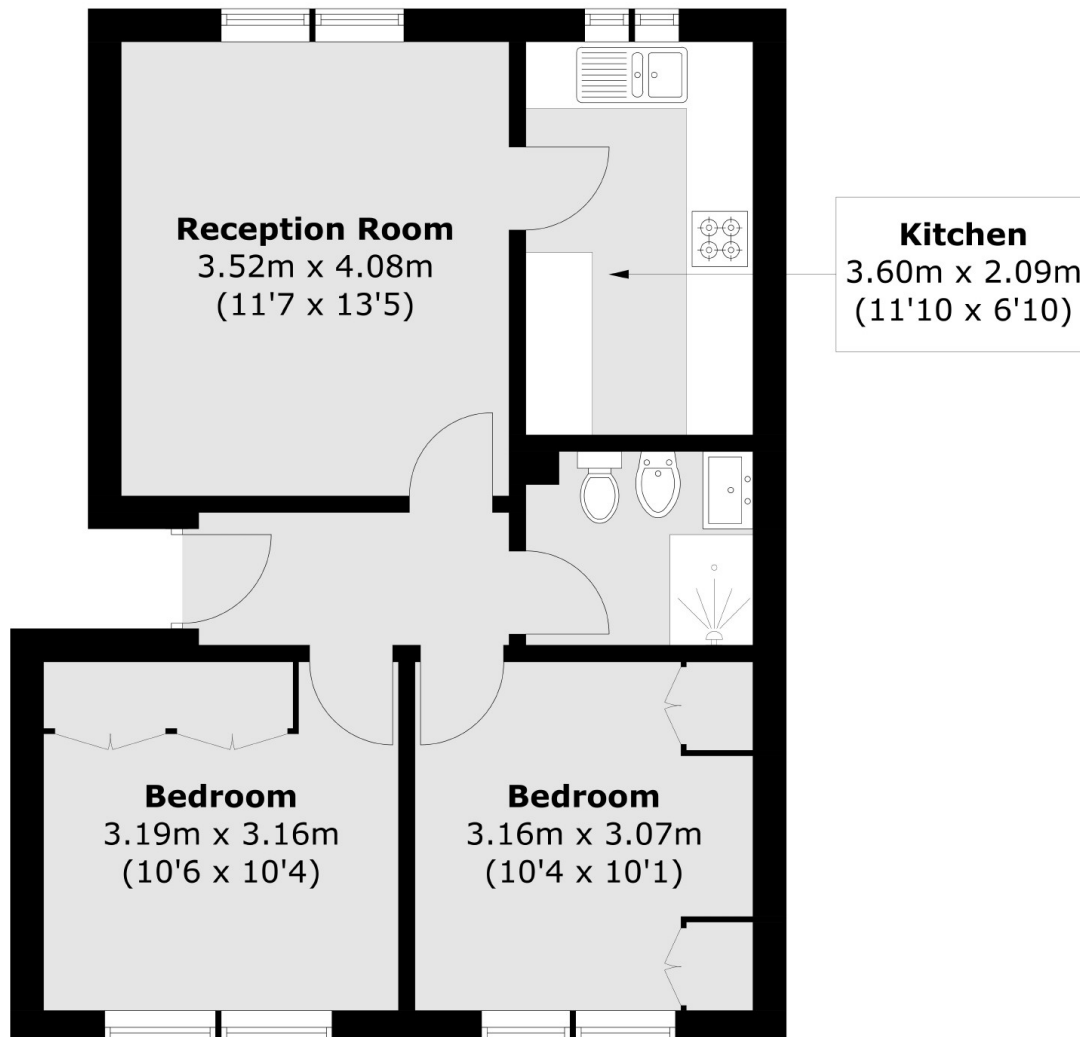
A generously proportioned, fully refurbished, two double bedroom first floor flat. The property comes with a long lease and use of a communal garden. When are you free to take a look?

Bel Lane is a quiet cul-de-sac located within easy reach of the A316, M3 Motorway, local shops as well as Kempton Park, Bushy Park and the River Thames. Local shops and excellent school are also close by.

Features

- First Floor Flat
- Long Lease
- Fully Refurbished
- Two Double Bedrooms
- Communal Garden
- Cul-de-sac

Bel Lane, Feltham, TW13



Total area (approx.): 51.2 sq. m (551.1sq. ft)