



Falstaff Mews, TW12

£649,950

This is a modern detached three bedroom house set within a gated mews style development. We love the vaulted ceilings and fun layout making it a quirky and interesting home. Coming with no onward chain it is well worth a look and we are keen to show you.

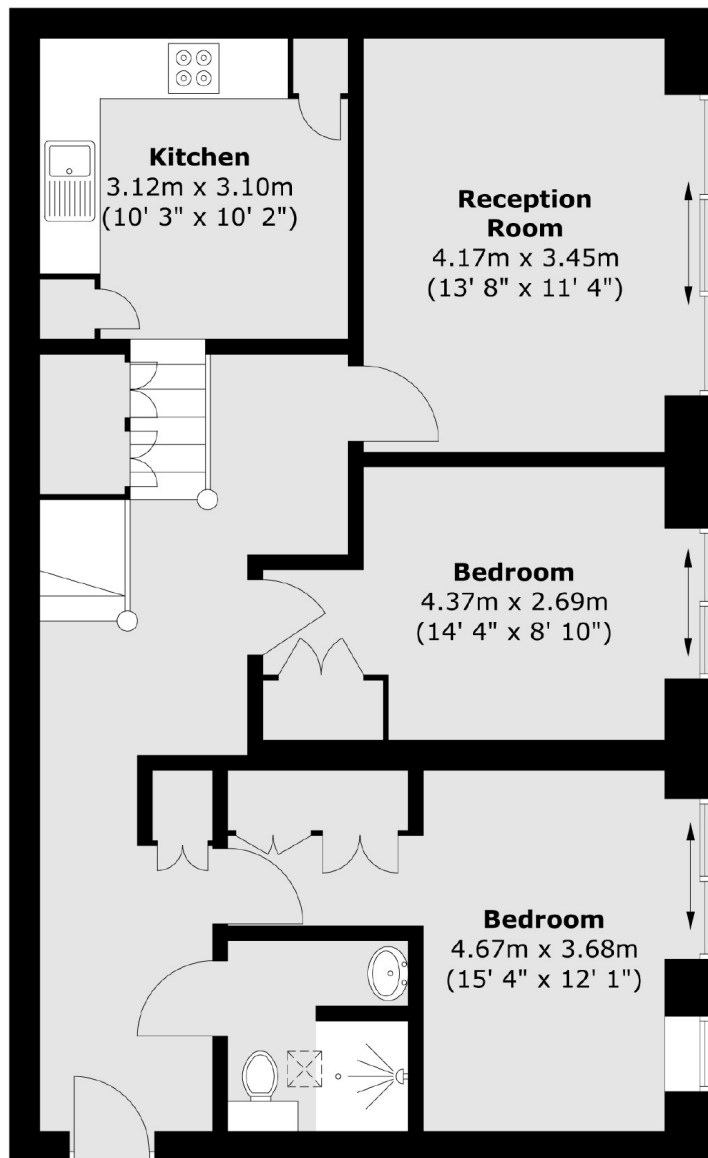
This convenient location is moments to the shops, restaurants and cafés on Hampton Hill High Street and a short walk to Bushy Park and Fulwell Train Station. You are also in catchment of some of the areas best schools.

Features

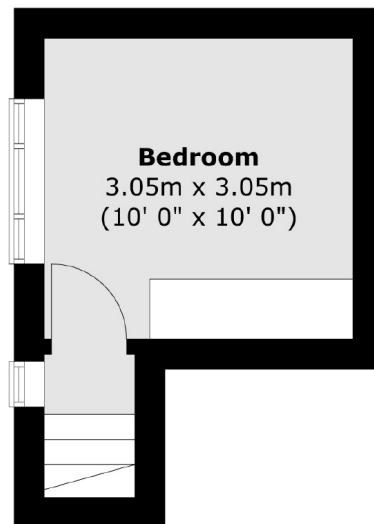
- Three Bedrooms
- Detached
- Off-Street Parking
- Gated Development
- No Onward Chain
- Patio Garden

Falstaff Mews, Hampton, TW12

Ground Floor



First Floor



→ **To
Garden**

Total area (approx.) : 83.4 sq. m (898 sq. ft)