



Station Road, TW12

£1,995 Per calendar month

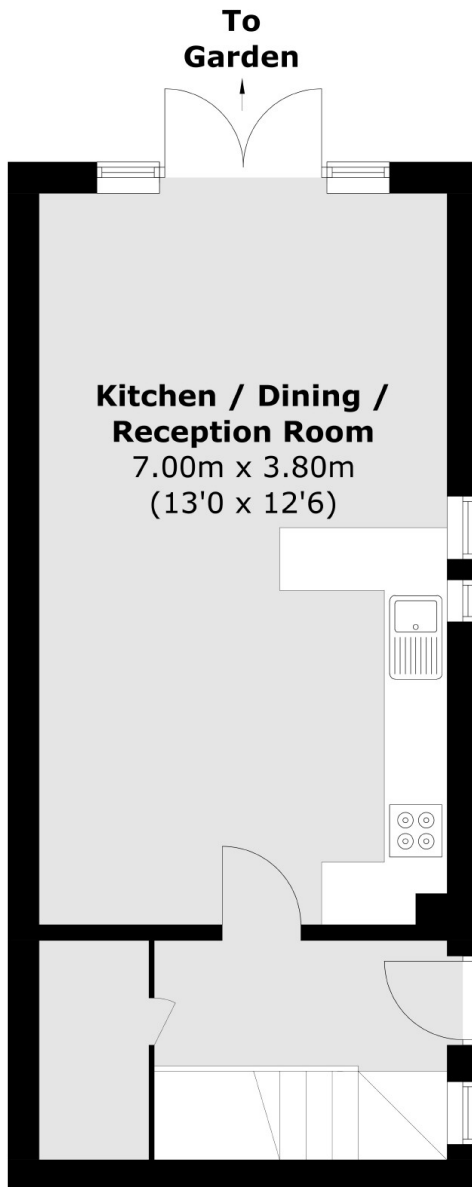
Set in the heart of Hampton is this modern two double bedroom house, the open plan kitchen reception room opens up onto a private garden. This house is tucked away and is a must see!

Station Road is minutes from Hampton train station, Waitrose and local shops. Convenient bus links are also close by, with direct access to Kingston and Heathrow.

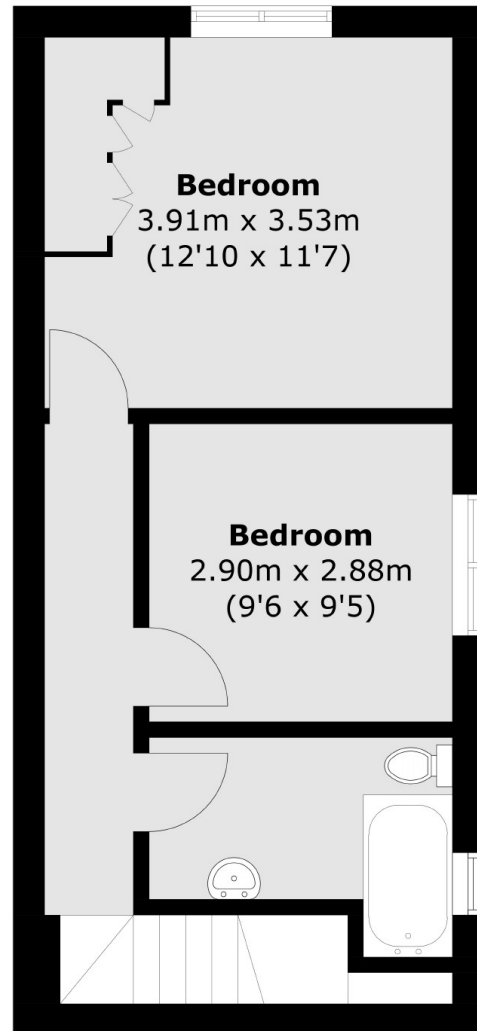
Features

- Two Double Bedrooms
- Modern Kitchen & Bathroom
- Private Garden
- Wooden Flooring
- Tucked Away
- Fantastic Location

Station Road, Hampton, TW12



Ground Floor



First Floor

Total area (approx.): 72.5 sq. m (780.4 sq. ft)