

Green Street, TW16

£1,800 Per calendar month

Located on the fifth floor of this popular development is this spacious two double bedroom penthouse with far reaching views of London skyline. The apartment has a minimalist bespoke approach and offers excellent entertaining space, which includes a contemporary kitchen with granite worktops and Bosch appliances, underfloor heating and high ceilings throughout.

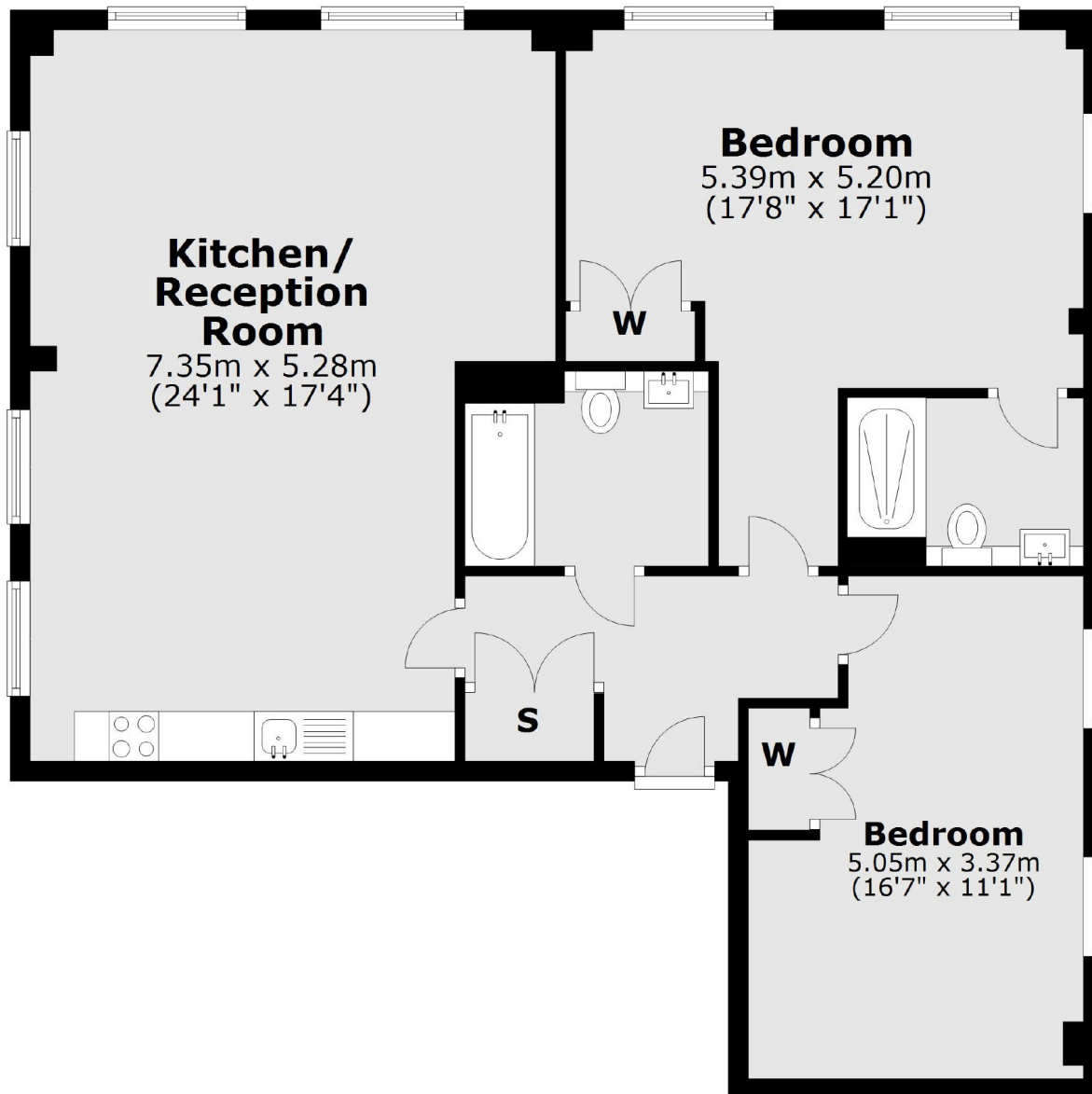
Benwell House is close to Sunbury Station, minutes from the A316 and just a short walk to Sunbury Cross with a wide selection of shops and amenities.

Features

- Residents Parking
- Kurve Heating System
- Lift
- Secure Storage Container
- Communal Lounge
- Bike Storage

**Green Street,
Sunbury-On-Thames, TW16**

Fifth Floor



Total area: approx. 88.5 sq. metres (952.7 sq. feet)