



Riverdale Road, TW13

£445,000

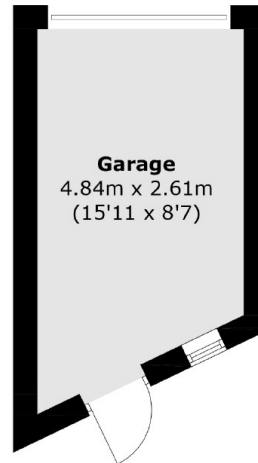
A three bedroom, one bathroom, semi-detached house with a double reception room, separate kitchen and private garden to the rear. We are big fans of this house and cannot wait for you to take a look.

Riverdale Road is a quiet residential road within walking distance of excellent transport links and local schools. Hampton Common, the Longford River and a variety of shops are also close by.

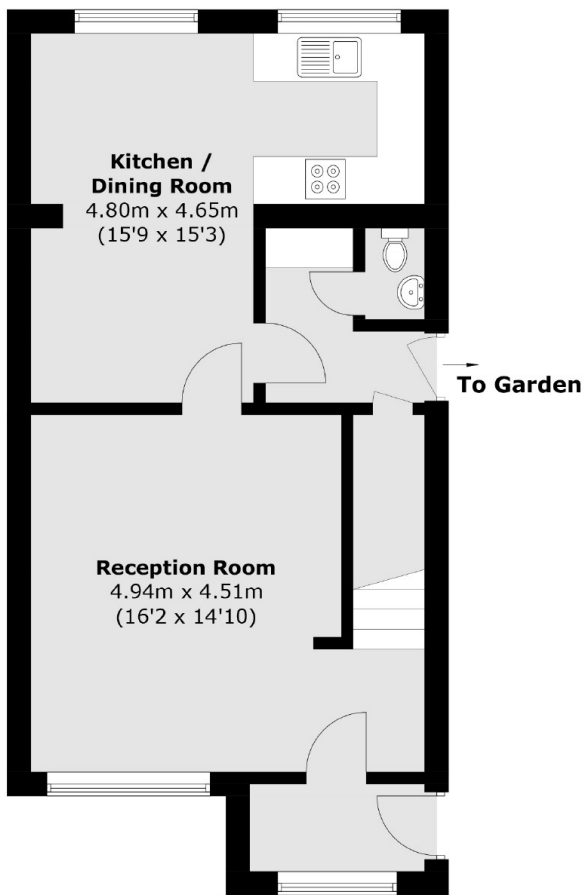
Features

- Three Bedrooms
- Semi-Detached
- No Onward Chain
- Potential To Extend (STP)
- Private Garden
- Garage

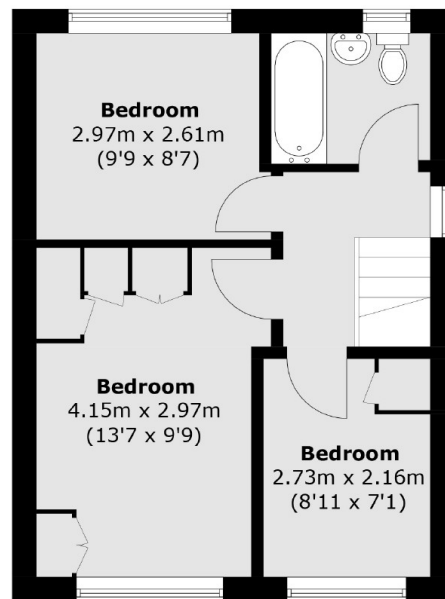
Riverdale Road, Hanworth, TW13



(Not Shown In Actual
Location / Orientation)



Ground Floor



First Floor

Total area (approx.): 82.9 sq. m (892.3 sq. ft)
Garage (approx.): 11.1 sq. m (119.5 sq. ft)