



Morland Close, TW12

£299,950

A fantastic two bedroom first floor maisonette located in a quiet residential cul-de-sac. Presented in great condition, with excellent communal gardens surrounding the property.

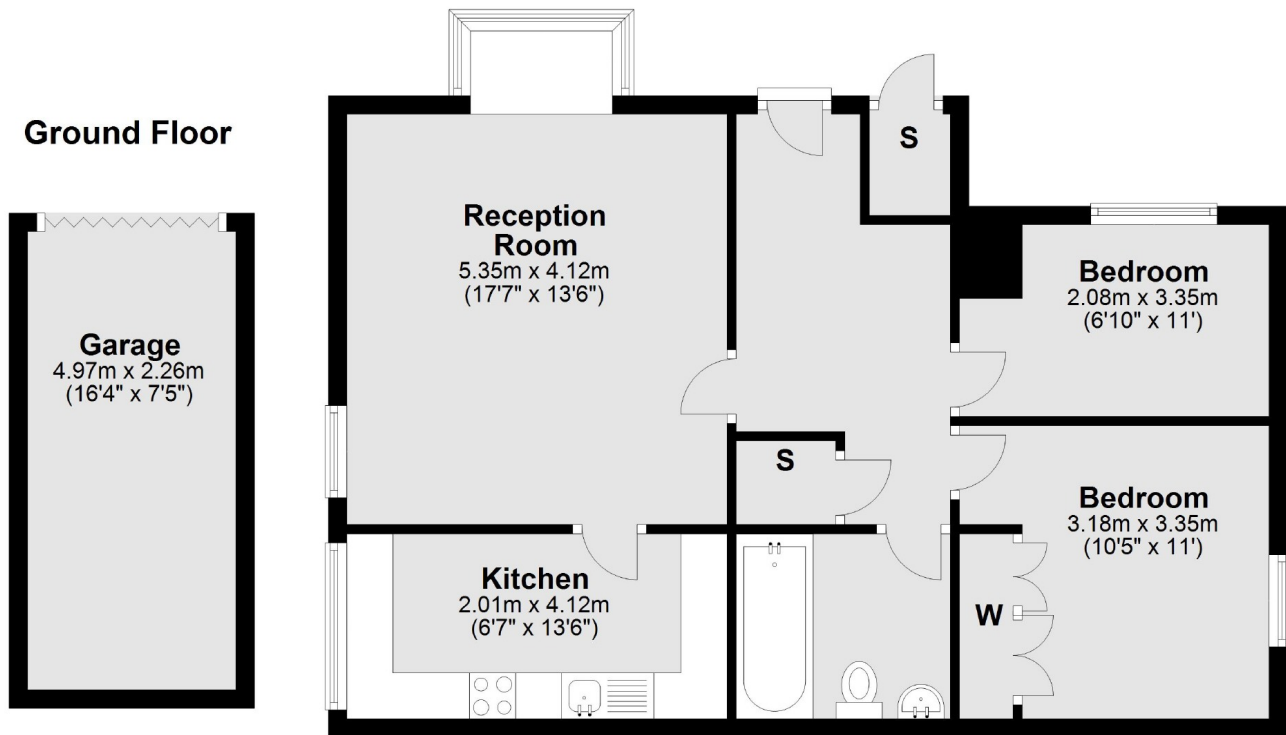
This maisonette is located in Morland Close, ideally positioned on the corner. The property has great bus links close by and within walking distance to local convenience shops and excellent schools.

Features

- Two Bedrooms
- Parking
- Close To Transport Links
- Garage
- Quiet Location
- No Onward Chain

Morland Close, Hampton, TW12

First Floor



Main area: Approx. 62.8 sq. metres (676.1 sq. feet)
Plus garages, approx. 11.2 sq. metres (120.9 sq. feet)