



Holly Bush Lane, TW12

£725,000

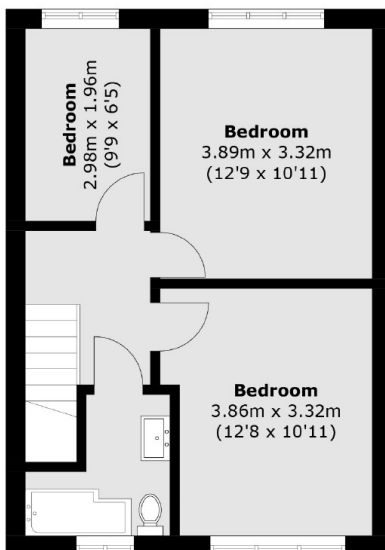
A newly renovated three bedroom house coming with the benefit of no onward chain. We absolutely love the quality of the finish, the South facing garden and off street parking - it ticks every box.

Holly Bush Lane is a popular road centrally located and close to Hampton mainline station with direct links to London Waterloo. Excellent schools and parks are close to hand.

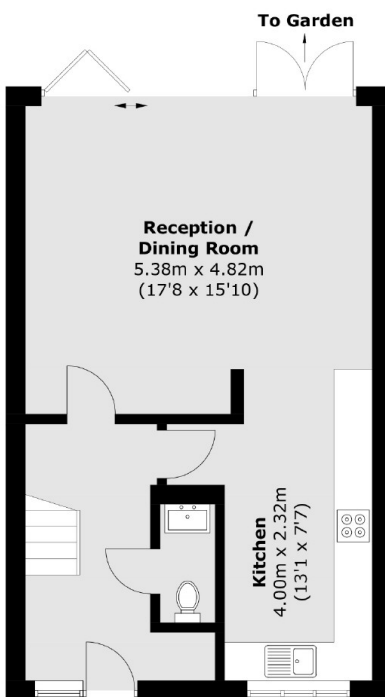
Features

- Three Bedrooms
- End Of Terrace
- Newly Renovated
- Off Street Parking
- South Facing Garden
- No Onward Chain

Holly Bush Lane, Hampton, TW12



First Floor



Ground Floor

Total area (approx.): 91.9 sq. m (989.2 sq. ft)