



Hounslow Road, TW13

£665,000

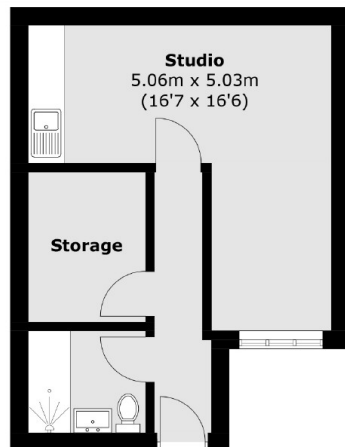
This is a loft converted and rear extended four bedroom house. Coming with a large garden studio there is tons of space for a growing family and we would love to arrange for you to view.

Hounslow Road is within easy reach of the A316, M3 Motorway, local shops as well as Kempton Park, Bushy Park and the River Thames. Local shops and excellent schools are also close by.

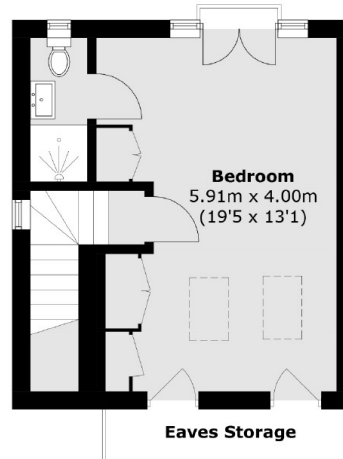
Features

- Four Bedrooms
- Loft Converted
- Semi Detached
- Off Street Parking
- Large Studio
- Westerly Facing Garden

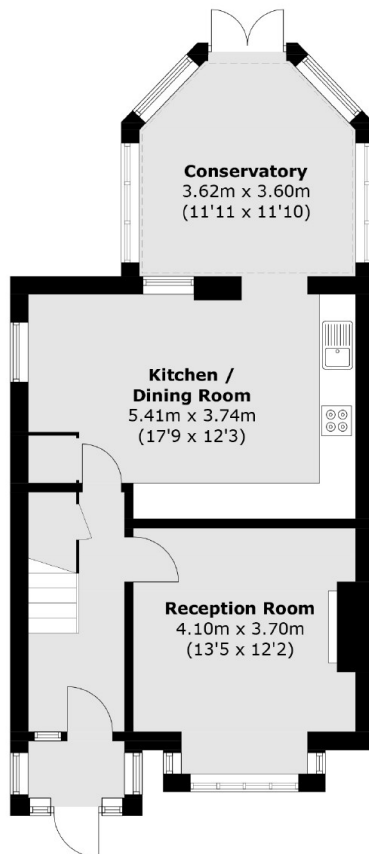
Hounslow Road, Feltham, TW13



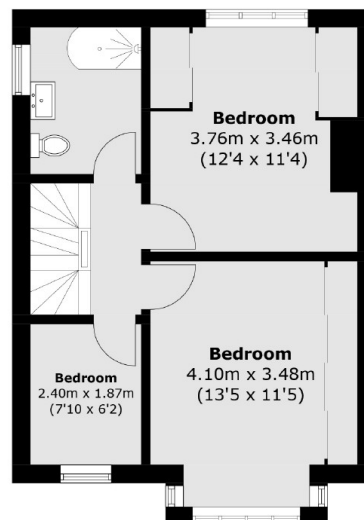
Annex



Second Floor



Ground Floor



First Floor

Total area (approx.): 127.8 sq. m (1,375.6 sq. ft)
Annex : 31.1 sq. m (334.7 sq. ft)