



Hatherop Road, TW12

£845,000

A bright and spacious four bedroom family home with two reception rooms, kitchen, large garden, garage and master suite with impressive views over Hatherop Park.

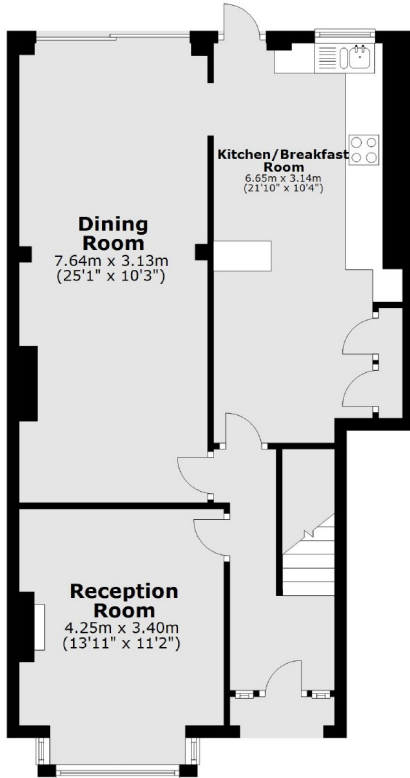
Hatherop Road is a popular residential road perfect for families. The park is at the end of the road, local shops, Waitrose and Hampton station with its services into London Waterloo are nearby.

Features

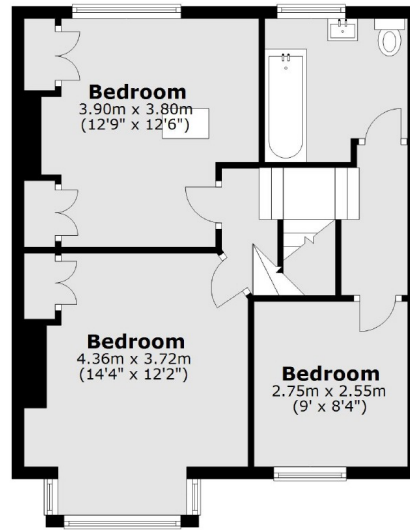
- Four Bedrooms
- Two Bathrooms
- Two Reception Rooms
- Large Garden
- Side/Rear Access
- Garage

Hatherop Road, Hampton, TW12

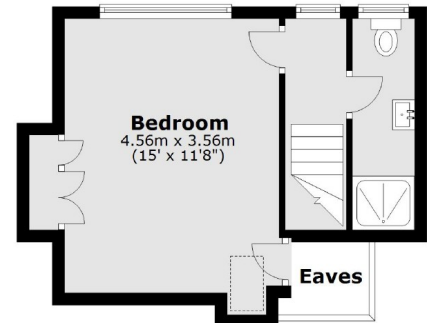
Ground Floor



First Floor



Second Floor



Total area: approx. 140.0 sq. metres (1507.3 sq. feet)