



Morland Close, TW12

£2,795 PCM

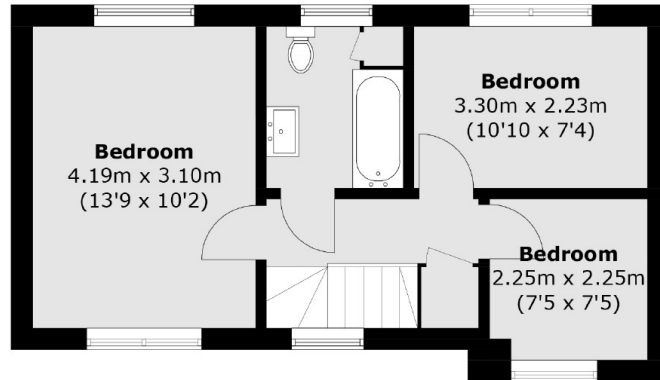
This detached family home is tucked away in a quiet close in Hampton and offers a wealth of space! There are four bedrooms, two bathrooms, a utility room, a secluded garden and off street parking.

This detached house is located in Morland Close which has great bus links close by and within walking distance to local convenience shops and excellent schools.

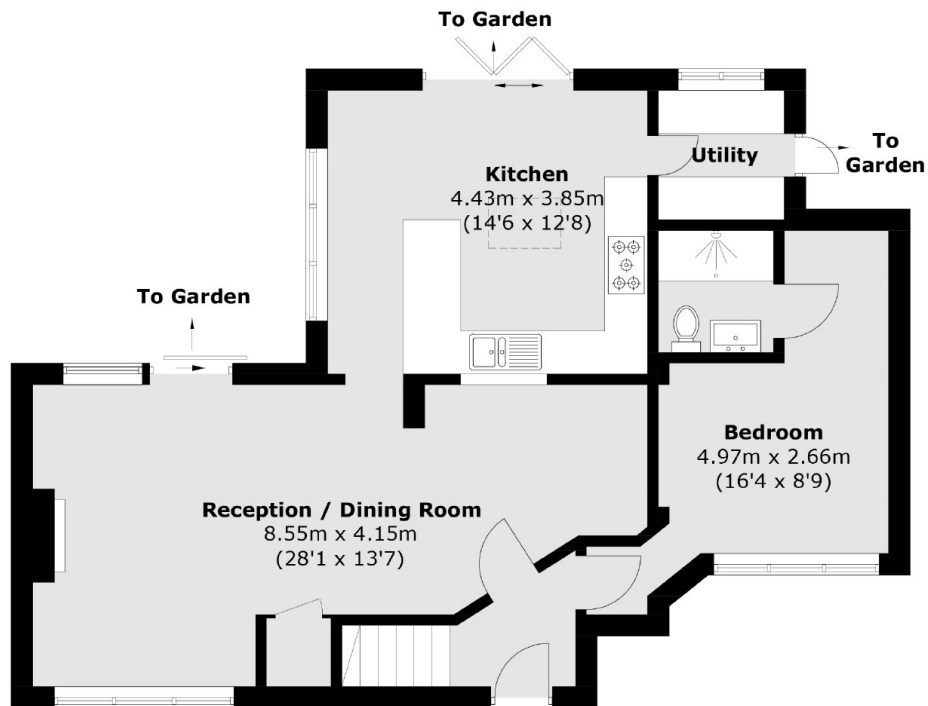
Features

- Detached House
- Four Bedrooms
- Two Bathrooms
- Huge Space Downstairs
- Wooden Flooring
- Driveway

Morland Close, Hampton, TW12



First Floor



Ground Floor

Total area (approx.): 109.7 sq. m (1,180.8 sq. ft)