



Wordsworth Road, TW12

£599,950

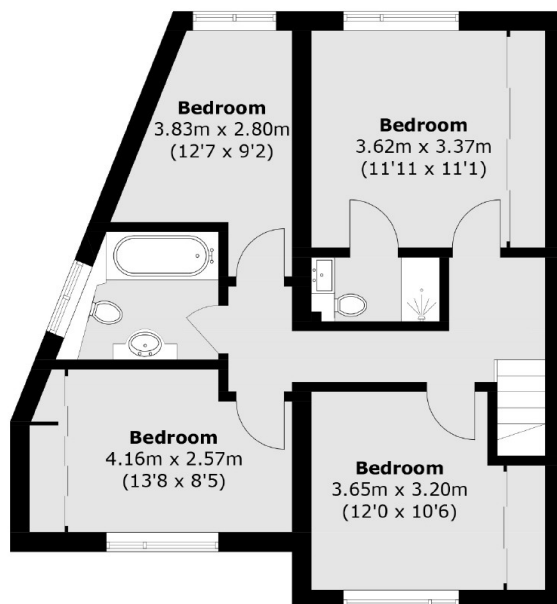
This is a side extended four bedroom house with further scope to loft convert (subject to planning permission). We love the lateral living space and feel that this makes a brilliant family home.

Wordsworth Road is located within the popular 'Poets' development in Hampton, a choice of state and private schools are all within walking distance. Bus routes, local parks, Hampton High Street, and Bushy Park are all nearby.

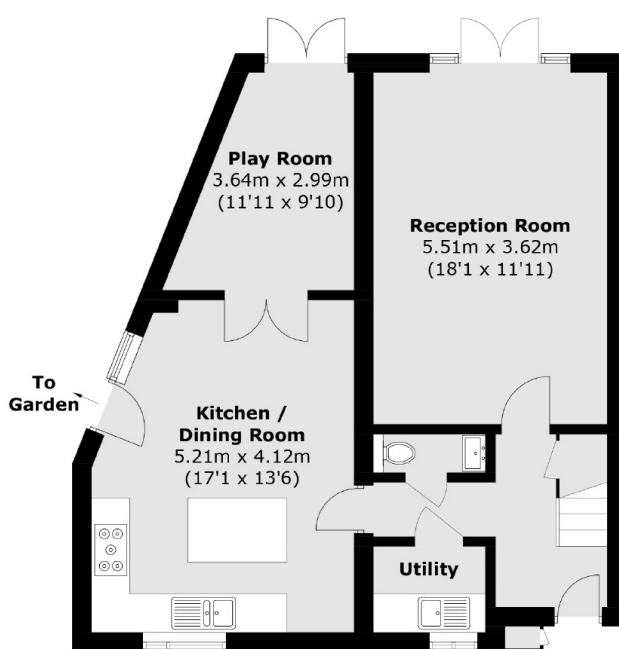
Features

- Four Bedrooms
- End Of Terrace
- Private Garden
- Garage
- Double Storey Side Extension
- Scope To Loft (STPP)

Wordsworth Road, Hampton, TW12



First Floor



Ground Floor

Total area (approx.): 121.8 sq. m (1,311.0 sq. ft)

Store area (approx.): 0.4 sq. m (4.3 sq. ft)