



## Uxbridge Road, TW12

£1,375,000

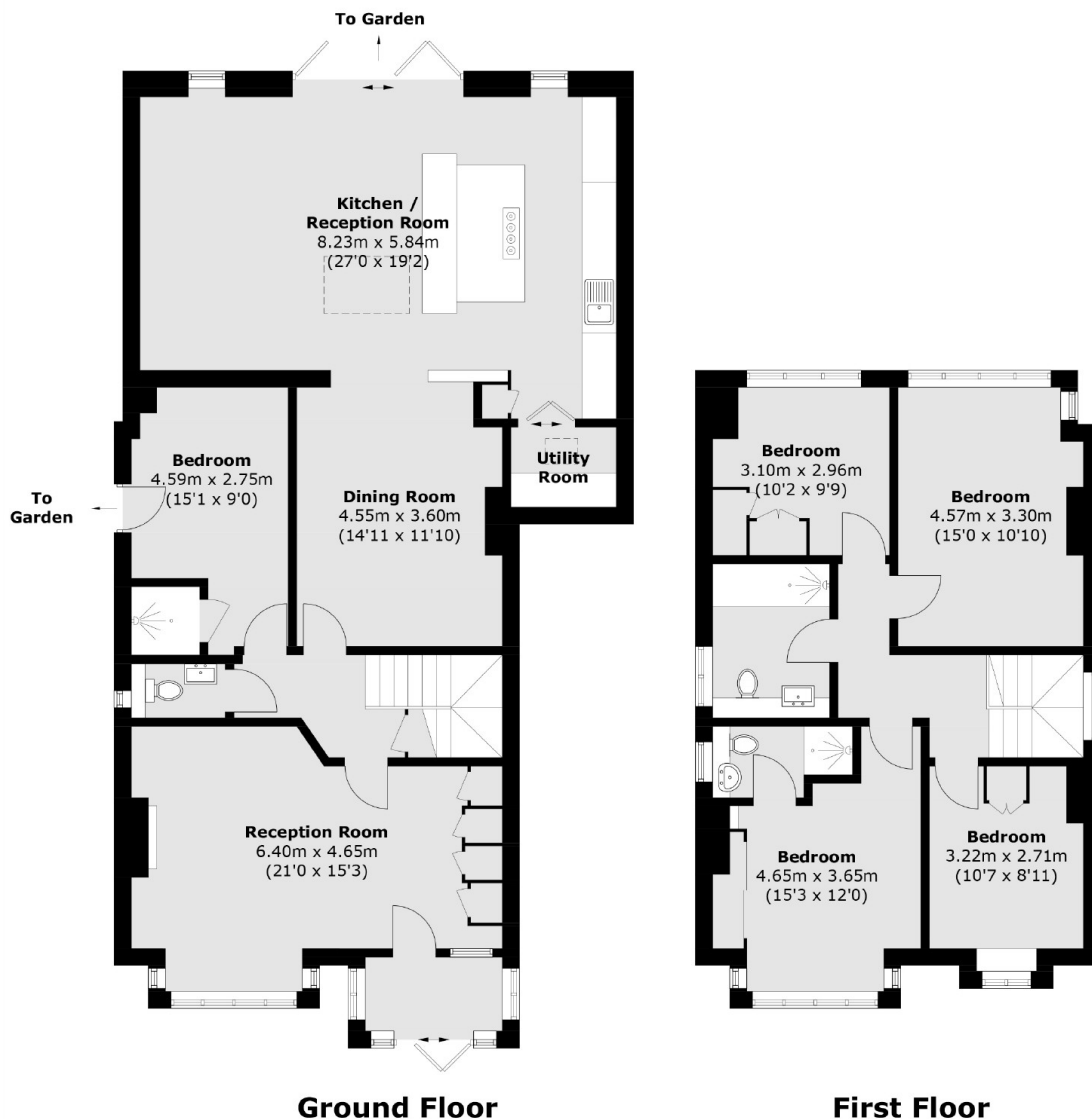
A detached 1920s five bedroom house which has been extended by the current owners and still offers further room to grow (subject to planning permission). We are fans of the character features such as high ceilings and original fireplaces.

Uxbridge Road has easy access to the High Street, Bushy Park and Fulwell Golf Course. If schools are on the agenda you will find a number located close by, including Lady Eleanor Hollis and Hampton Hill Juniors - both rated outstanding.

### Features

- Detached
- Four/Five Bedrooms
- Bespoke Kitchen
- Parking For Multiple Cars
- Private Garden
- Scope To Extend

# Uxbridge Road, Hampton, TW12



Total area (approx.): 182.9 sq. m (1,968.7 sq. ft)