



Cross Street, TW12

£899,950

Dexters



Cross Street, TW12

We love how generously proportioned this Edwardian three bedroom, two bathroom house is. With plenty of period features - stained glass, feature fireplaces, high ceilings - we are confident that you will fall head over heels for it too.

You approach the house to a pretty stained glass porch, leading to an entrance hallway with front reception room and a large, open plan kitchen/diner. Configured to perfectly suit family living it provides a brilliant entertaining space too.

Going upstairs the property comes with two double bedrooms and a bathroom on the first floor. The loft has been converted to create a third double bedroom with ensuite bathroom.

Bi-fold doors to the rear of the house open out to a South facing garden with a very useful garden office meaning you can work close to home without any distractions!

Cross Street sits on the borders of Hampton Hill, Teddington and Twickenham, making it a popular location for its convenience. Fulwell station, Bushy Park, Hampton Hill High Street and fantastic schools are all a short walk away.

Features

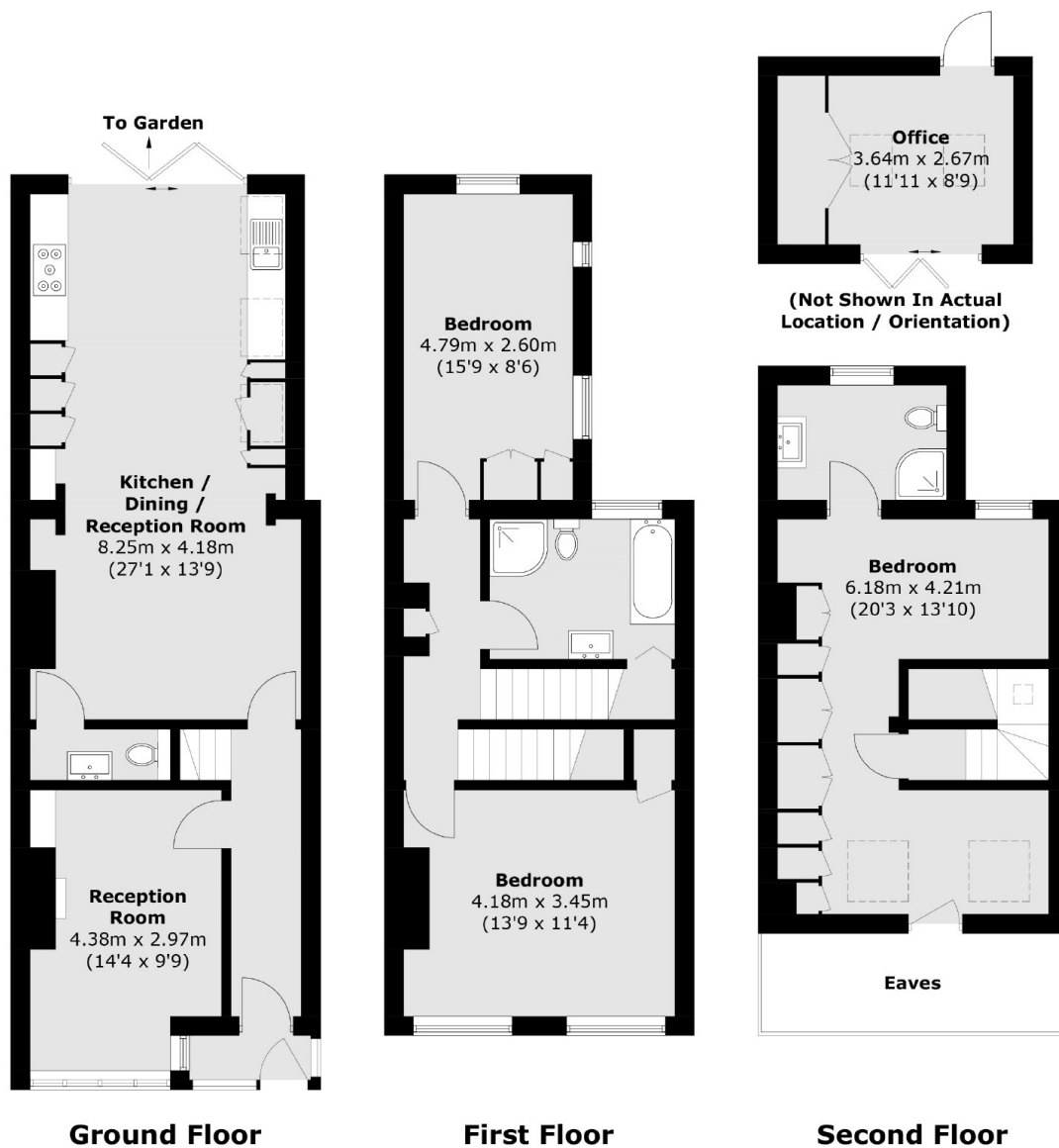
- Edwardian
- Three Bedrooms
- Stained Glass
- South Facing Garden
- Period Features
- Loft Converted







Cross Street, Hampton, TW12



Total area (approx.): 136.5 sq. m (1,469.3 sq. ft)
(Excluding Eaves)
Office: 10.2 sq. m (109.8 sq. ft)