



## Wigley Road, TW13

£425,000

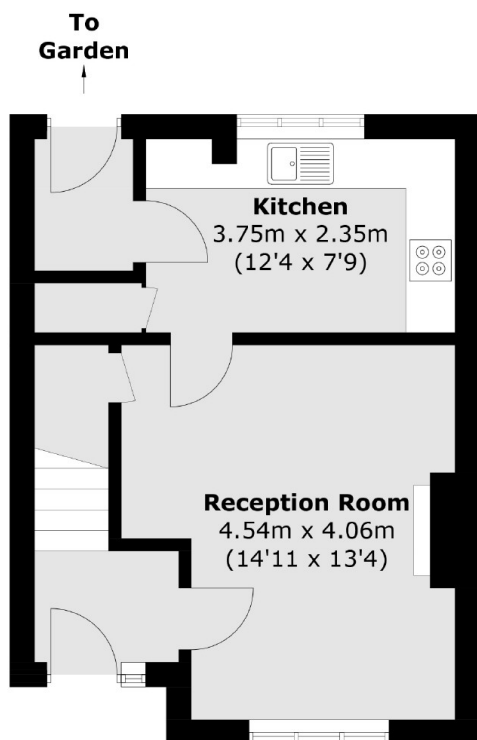
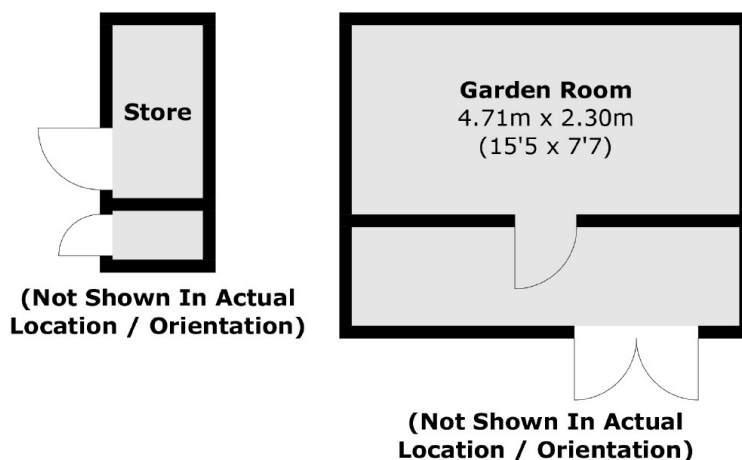
This three bedroom end of terraced house is ripe to make it your own, with room to extend to the loft and rear (subject to planning permission) it will make a great family home.

Wigley Road is a quiet residential street close to local shops, schools and parks. Feltham train station is located approx. 1 km away and runs a regular service into London Waterloo and Reading.

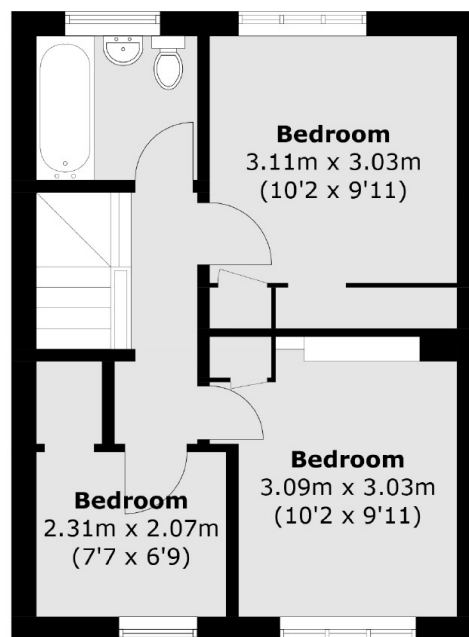
### Features

- \*\*Chain Free\*\*
- Three Bedrooms
- End Of Terrace
- Scope To Extend (STPP)
- Views Overlooking The Green
- Private Garden

# Wigley Road, Feltham, TW13



**Ground Floor**



**First Floor**

Total area (approx.): 70.8 sq. m (762.1 sq. ft)  
Garden Room : 17.1 sq. m (184.1 sq. ft)  
Store : 3.2 sq. m (34.4 sq. ft)