



Broad Lane, TW12

£479,950

You will be impressed with the size of this large and well proportioned two double bedroom first floor flat. Benefitting from over 1000 sqft, two bathrooms, allocated parking and landscaped communal gardens.

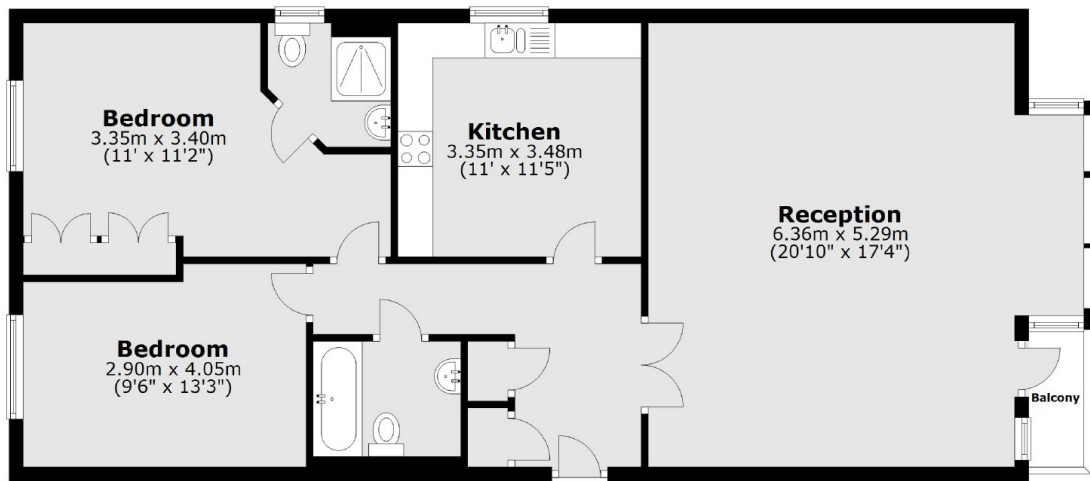
Broad Lane is situated in a prime location in Hampton. There is easy access to bus routes and Hampton Station. If you have children you will appreciate the excellent schools and Carlisle Park.

Features

- Two Double Bedrooms
- Two Bathrooms
- Parking
- Private Balcony
- Communal Garden
- No Onward

Broad Lane, Hampton, TW12

First Floor



Total area: approx. 93.0 sq. metres (1000.6 sq. feet)