



Wordsworth Road, TW12

£450,000

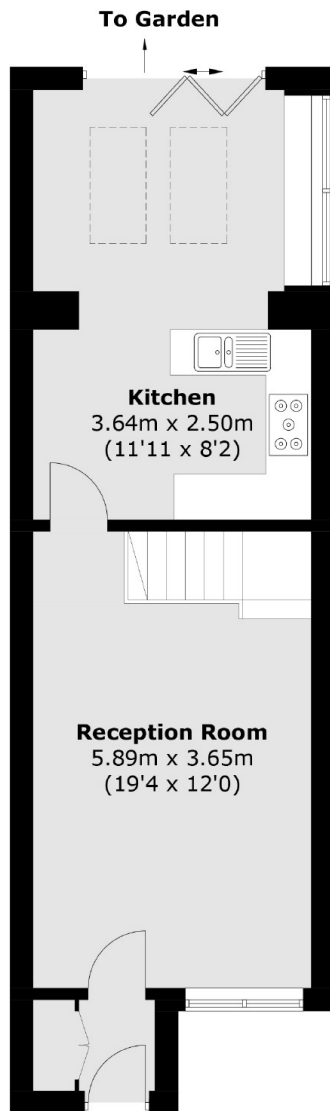
This is a loft converted and rear extended, three bedroom house. We are love how bright the house is and are confident it makes a great family home.

Wordsworth Road is located within the popular 'Poets' development in Hampton, a choice of state and private schools are all within walking distance. Bus routes, local parks, Hampton High Street, Bushy Park are all nearby.

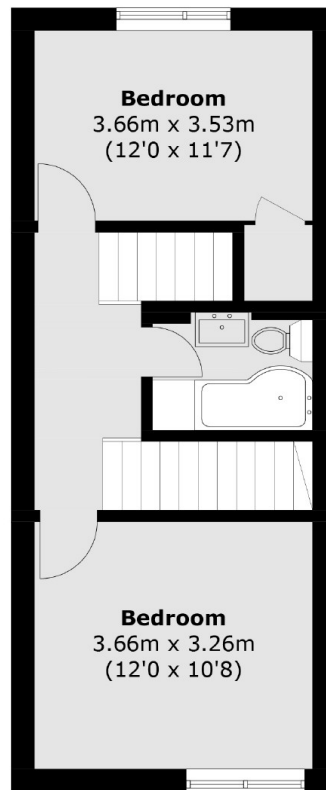
Features

- Three Bedrooms
- Private Garden
- Rear Extended
- Loft Converted
- Off Street Parking
- Garage

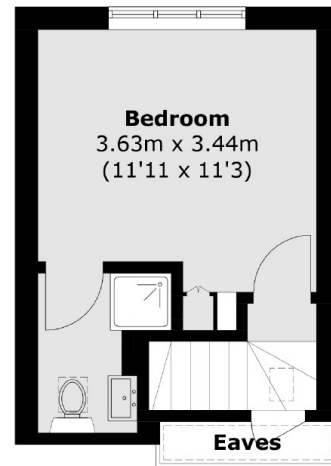
Wordsworth Road, Hampton, TW12



Ground Floor



First Floor



Second Floor

Total area (approx.): 99.7 sq. m (1,073.1 sq. ft)
(Excluding Eaves)