



Cross Street, TW12

£769,950

This characterful end of terrace Victorian house offers three bedrooms, two reception rooms, eat-in kitchen, family bathroom and has potential to extend (STPP). The home office sits perfectly at the end of the south facing garden.

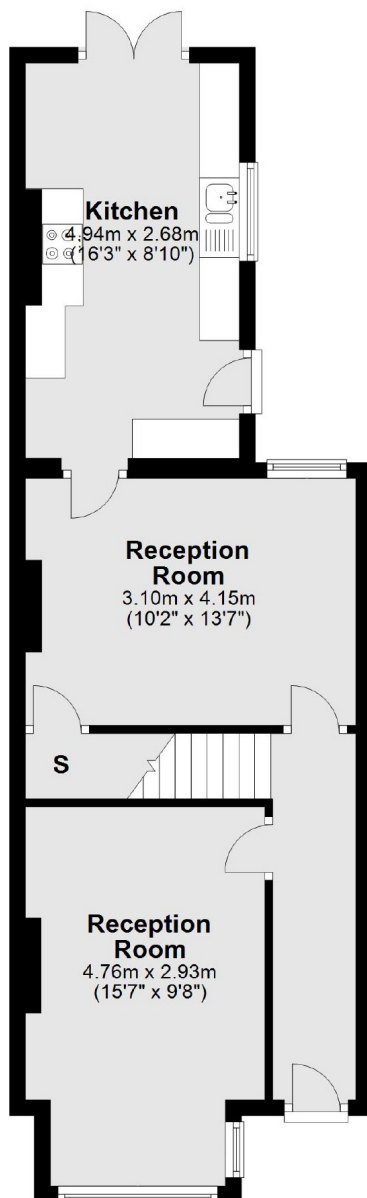
Cross Street is conveniently located just off Hampton Hill High Street, close to shops, restaurants, cafés, Bushy Park and Fulwell Station is just a short walk.

Features

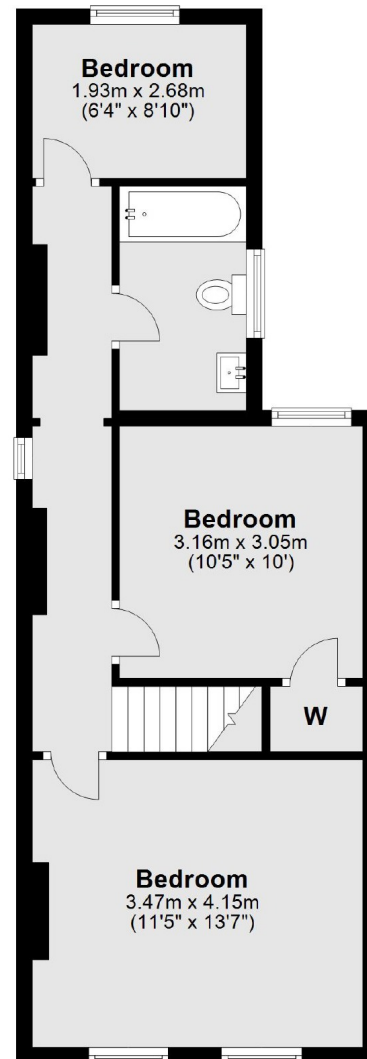
- Three Bedrooms
- South Facing Garden
- Period Features
- Central Location
- Good Condition
- No Chain

Cross Street, Hampton, TW12

Ground Floor



First Floor



Total area: approx. 94.6 sq. metres (1018.1 sq. feet)

Contact

To arrange a viewing call our office on the number below or visit our website.



Energy Rating: D. We aim to make our particulars both accurate and reliable. However they are not guaranteed; nor do they form part of an offer or contract. If you require clarification on any points then please contact us, especially if you're traveling some distance to view. Please note that appliances and heating systems have not been tested and therefore no warranties can be given as to their good working order.