



Fulham Road, SW6

£800,000

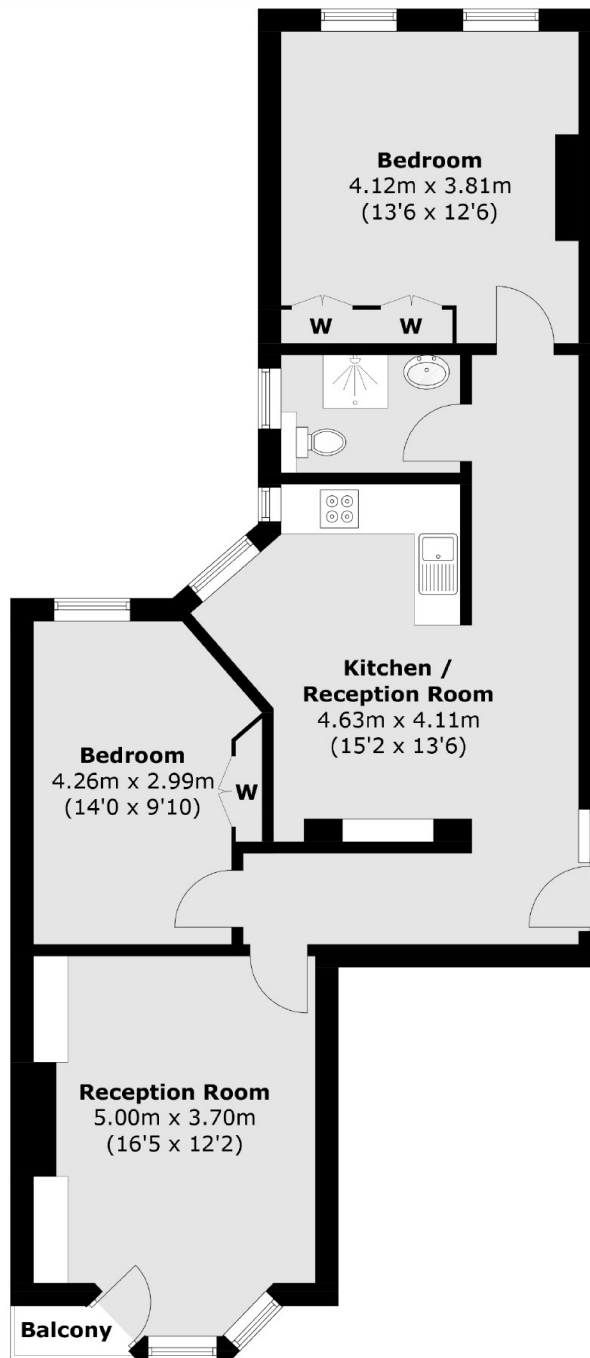
Located on the third floor of this attractive red brick mansion block, is a bright and spacious two double bedroom apartment. The property comprises of a contemporary eat in kitchen, two double bedrooms, modern shower room and a large separate reception area.

King Edward Mansions is close to Parsons Green as well as Fulham Broadway and has a variety of shops, restaurants, bars and boutiques on the doorstep.

Features

- Excellent Location
- Mansion Block
- Two Double Bedrooms
- High Ceilings
- Period Features
- Eat in Kitchen

Fulham Road, London, SW6



Third Floor

Total area (approx.): 79.3 sq. m (853.5 sq. ft)
Balcony area: 0.8 sq. m (8.6 sq. ft)