



De Morgan Road, SW6

£675,000

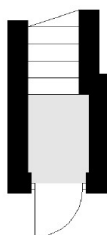
A beautifully presented split-level apartment offering four double bedrooms and two bathrooms, situated in the highly sought-after Sands End area of Fulham. This spacious property provides well-proportioned accommodation throughout and features a striking mezzanine-style kitchen, adding both character and contemporary flair.

De Morgan is a quiet residential street located in the popular Sands End area of Fulham. The property is well placed to benefit from the amenities and transport links of Wandsworth Bridge Road, Imperial Wharf and Fulham Broadway, with the prestigious Chelsea Harbour Club moments away.

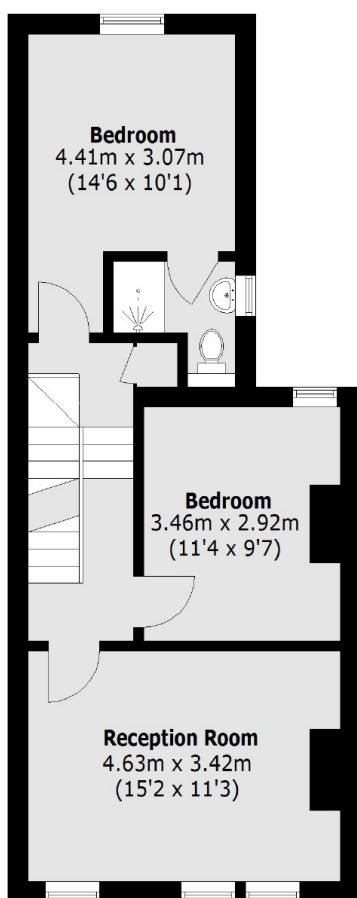
Features

- Split Level Apartment
- Four Double Bedrooms
- Two Bathrooms
- Modern Kitchen
- Spacious Reception Room
- Imperial Wharf Station

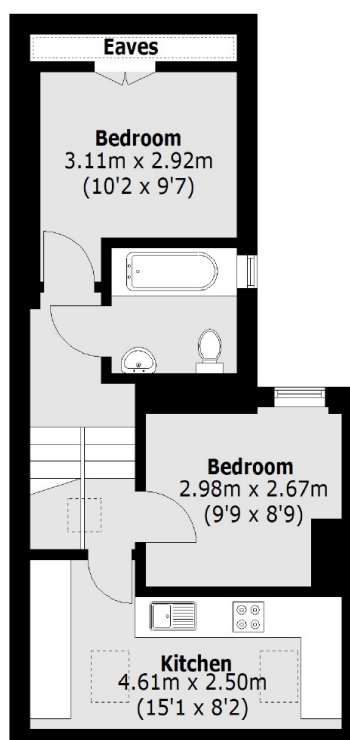
De Morgan Road, London, SW6



Ground Floor



First Floor



Second Floor

Total area (approx.): 87.9 sq. m (946.1 sq. ft)
(Excluding Eaves)