

Farm Lane, SW6

£950,000

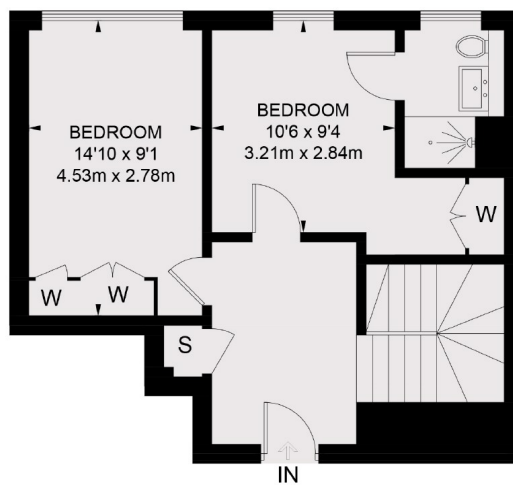
Offers in excess of £1,000,000. A beautifully finished two bedroom split level apartment in one of Fulham's best developments. The property benefits from a private balcony and two bathrooms.

Landau development is in the heart of Fulham just moments away from local amenities such as shops, restaurants, Fulham Broadway station and West Brompton Station.

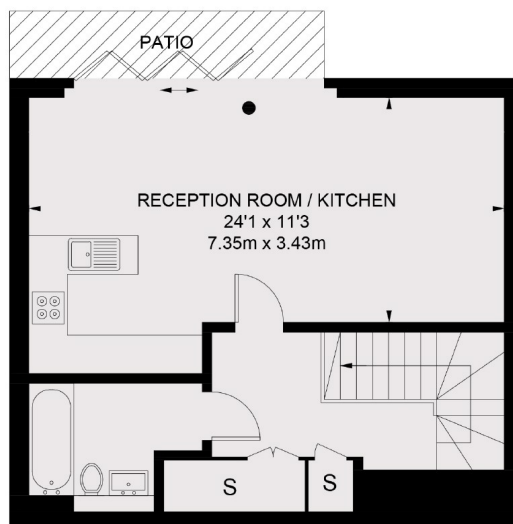
Features

- Two Bedrooms
- Contemporary Bathrooms
- Allocated Parking
- 24 Hour Concierge
- Fully Equipped Gym
- Well Located

Farm Lane, London, SW6



GROUND FLOOR



LOWER GROUND FLOOR

TOTAL APPROX. FLOOR AREA 992 SQ. FT. (92.1 SQ. M.)

Contact

To arrange a viewing call our office on the number below or visit our website.



Energy Rating: B. We aim to make our particulars both accurate and reliable. However they are not guaranteed; nor do they form part of an offer or contract. If you require clarification on any points then please contact us, especially if you're traveling some distance to view. Please note that appliances and heating systems have not been tested and therefore no warranties can be given as to their good working order.