



Edith Row, SW6

£1,038 Per week

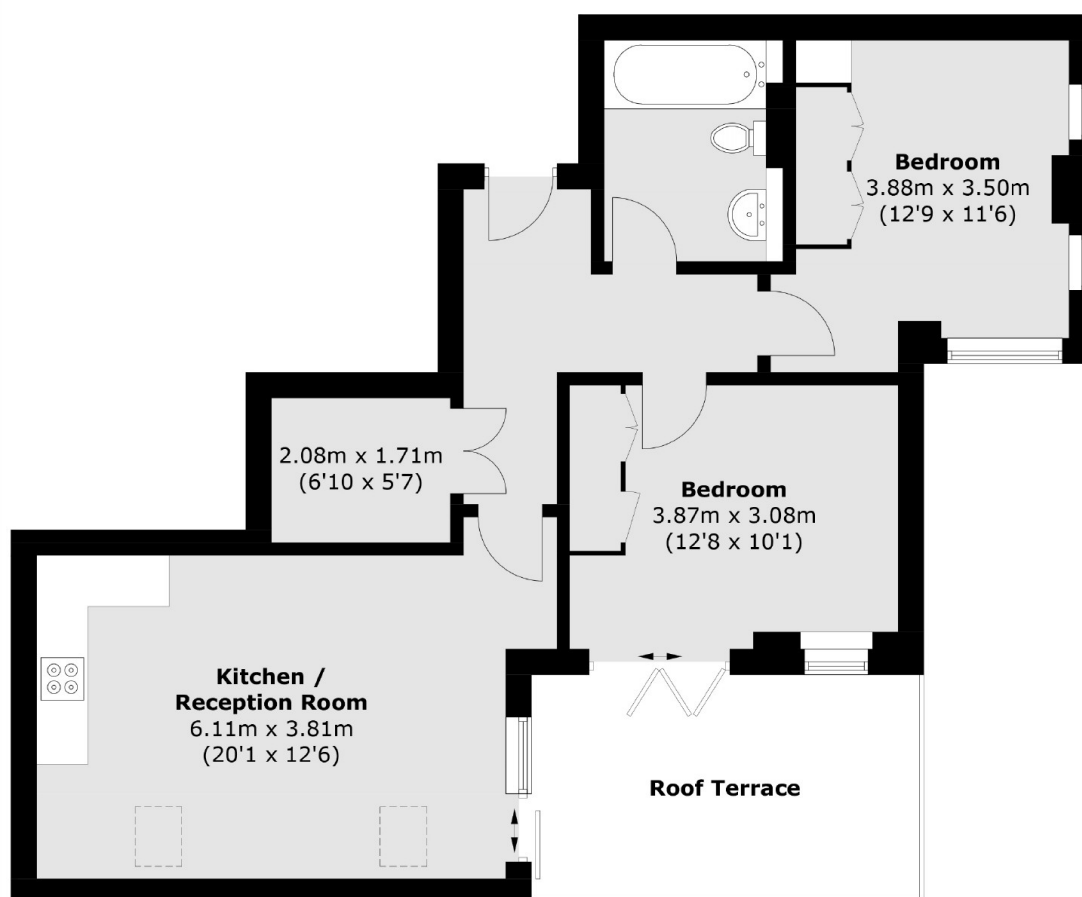
A stunning and immaculately present two bedroom apartment off the Kings Road. Boasting modern fixtures and fittings throughout the property offers a large open plan kitchen/reception room, two double bedrooms and family bathroom.

Edith Row is perfectly located off the popular Kings Road with the transport links of Fulham Broadway close by.

Features

- New Build Development
- Two Bedrooms
- One Bathroom
- Wooden Flooring
- Modern Fixtures And Fittings
- Concierge

Edith Row, London, SW6



Total area (approx.): 65.6 sq. m (706.1 sq. ft)
Terrace area (approx.): 12.0 sq. m (129.1 sq. ft)