



Holyport Road, SW6

£1,000,000

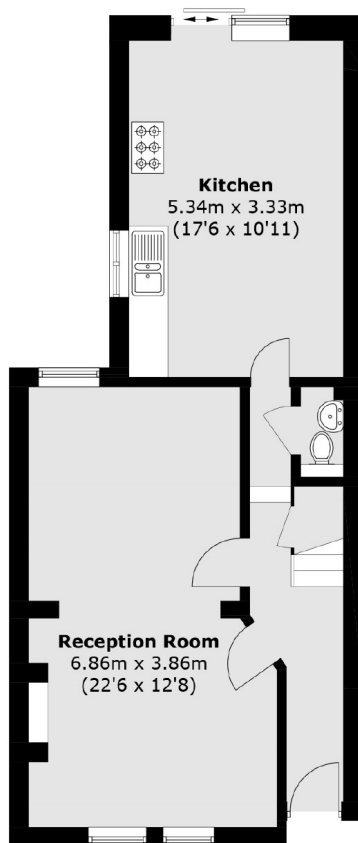
This spacious mid-terrace house offers four double bedrooms, two bathrooms, and generous living space throughout. The ground floor features a double reception room and an open-plan kitchen/dining area leading to a private patio garden.

Holyport Road is a quiet residential road located in the popular Alphabet Streets within the Crabtree Conservation Area. There is easy access to Bishops Park and the Thames Path running along the River.

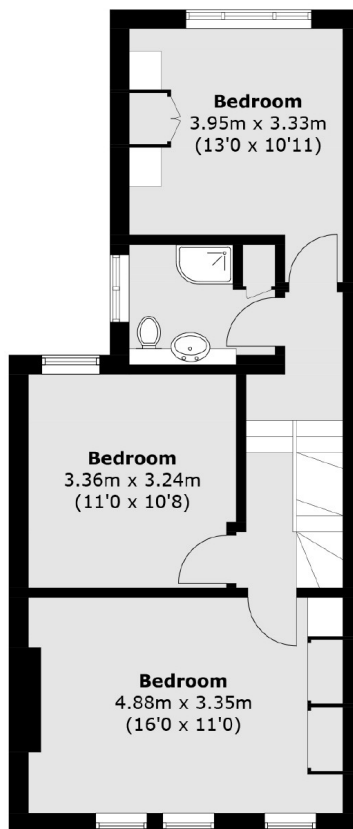
Features

- Mid Terraced Freehold House
- Four Double Bedrooms
- Private Patio Garden
- Double Reception Room
- Potential To Extend (STPP)
- Quiet Residential Street

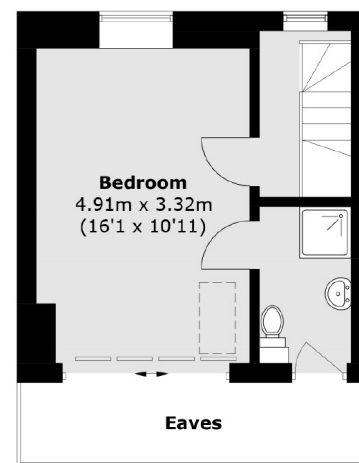
Holyport Road, London, SW6



Ground Floor



First Floor



Second Floor

Total area (approx.): 127.7 sq. m (1,374.6 sq. ft)
(Excluding Eaves)