



Bradbourn Street, SW6

£1,962 Per week

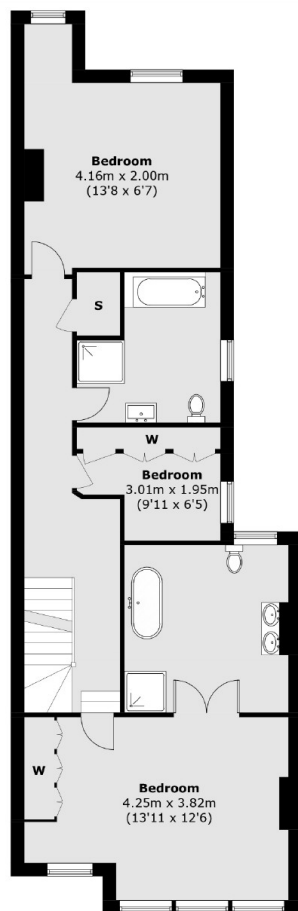
This beautiful family home has a wealth of charm and includes a large reception room, a new fitted kitchen/ family room with doors to the garden, two further receptions, five bedrooms and three luxurious bathrooms (one ensuite).

Conveniently located on this popular road in the Peterborough Estate with easy access to Parsons Green Station, local amenities including restaurants and independent cafes.

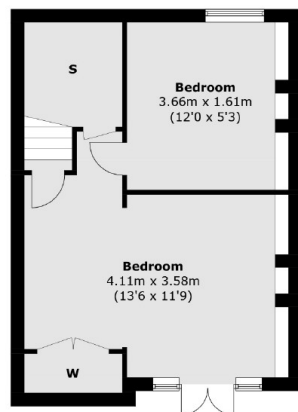
Features

Spacious Lion House
Large Kitchen/ Family Room
Five Bedroom Family Home
Three Stylish Bathrooms
Three Large Receptions
Sought After Parsons Green

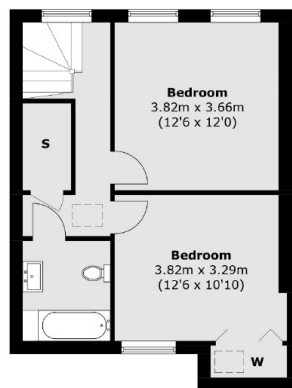
Bradbourne Street, London, SW6



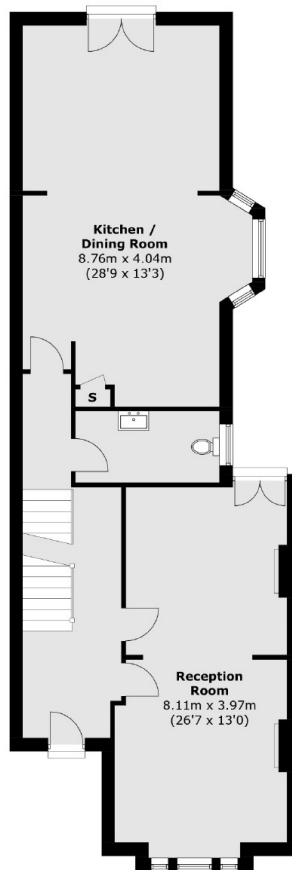
First Floor



Lower Ground Floor



Second Floor



Ground Floor

Total area (approx.): 259.7 sq. m (2,794.9 sq. ft)

Dexters

Fulham
569 Fulham Road
London
SW6 1ES
Lettings
020 7386 7386

Energy Rating: E. We aim to make our particulars both accurate and reliable. However they are not guaranteed; nor do they form part of an offer or contract. If you require clarification on any points then please contact us, especially if you're traveling some distance to view. Please note that appliances and heating systems have not been tested and therefore no warranties can be given as to their good working order.

RICS Regulated
Estate Agent
and Letting Agent

dexters.co.uk