



Micklethwaite Road, SW6

£923 Per week

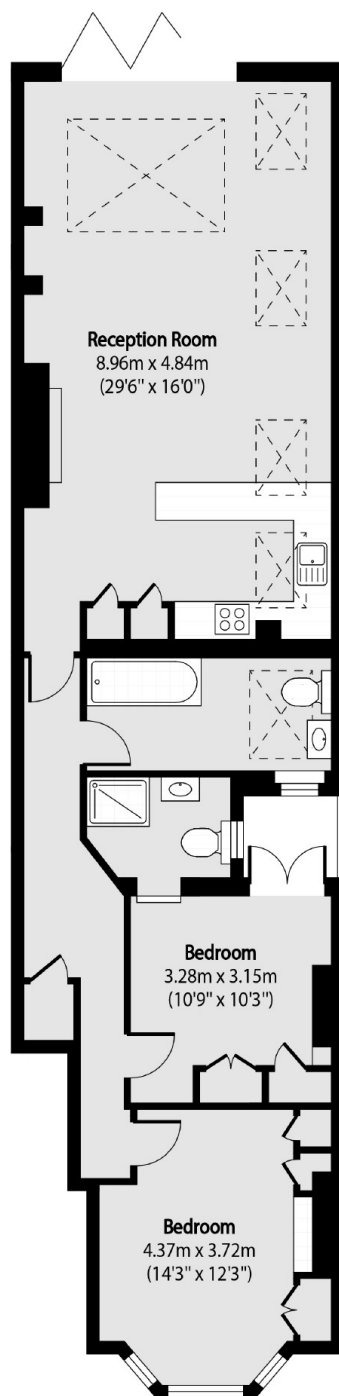
A two bed two bathroom garden flat, finished to the highest standard on this residential road. This spacious modern flat is situated in the heart of Fulham.

Micklethwaite Road is perfectly located for the amenities on Fulham Road and transport links of both Fulham Broadway and West Brompton.

Features

- Wooden Flooring Throughout
- Private Garden
- Open Plan Kitchen Reception
- Two Bathrooms
- Newly Refurbished
- Modern Bathroom and Kitchen

Micklethwaite Road, London, SW6



Total area (approx): 91.59 sq m (986 sq. ft)

Dexters

Fulham
569 Fulham Road
London
SW6 1ES
Lettings
020 7386 7386

Energy Rating: . We aim to make our particulars both accurate and reliable. However they are not guaranteed; nor do they form part of an offer or contract. If you require clarification on any points then please contact us, especially if you're traveling some distance to view. Please note that appliances and heating systems have not been tested and therefore no warranties can be given as to their good working order.

 **RICS** | Regulated
Estate Agent
and Letting Agent

[dexters.co.uk](https://www.dexters.co.uk)