

Walham Yard, SW6

£1,200 Per week

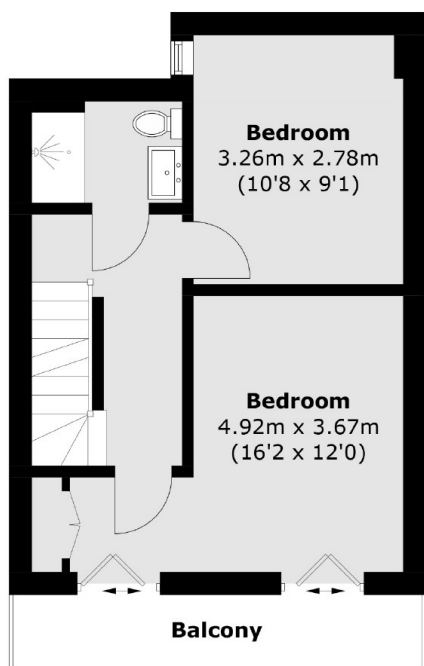
A beautifully refurbished three double bedroom, three bathroom mews house with a large kitchen-dining area and separate reception room. This property is located within a gated mews and includes off-street parking.

Situated off both Walham Grove and Eustace Road, the mews is within close proximity to the amenities and transport links of both Fulham Broadway and West Brompton.

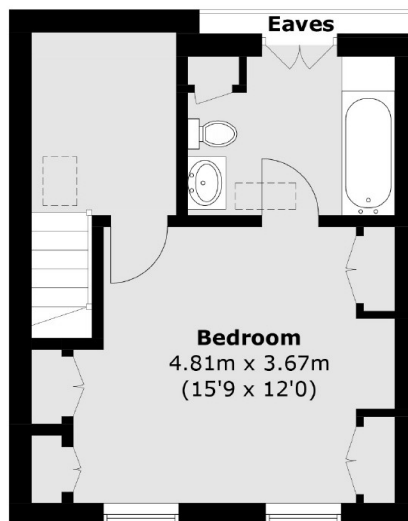
Features

- Three Bedroom
- Three Bathroom
- Gated Mews
- Modern Interiors
- Built in Storage
- Off Street Parking

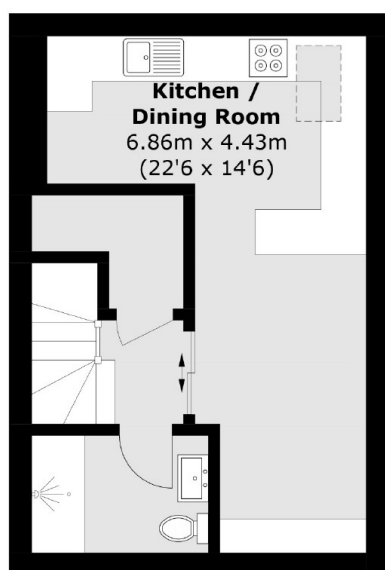
Walham Yard, London, SW6



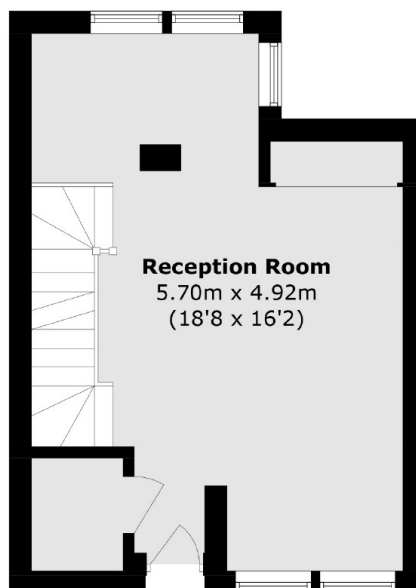
First Floor



Second Floor



Lower Ground Floor



Ground Floor

Total area (approx.): 115.5 sq. m (1,243.5 sq. ft)
(Excluding Eaves)
Balcony: 5.3 sq. m (57.0 sq. ft)