



Edenvale Street, SW6

£599,999

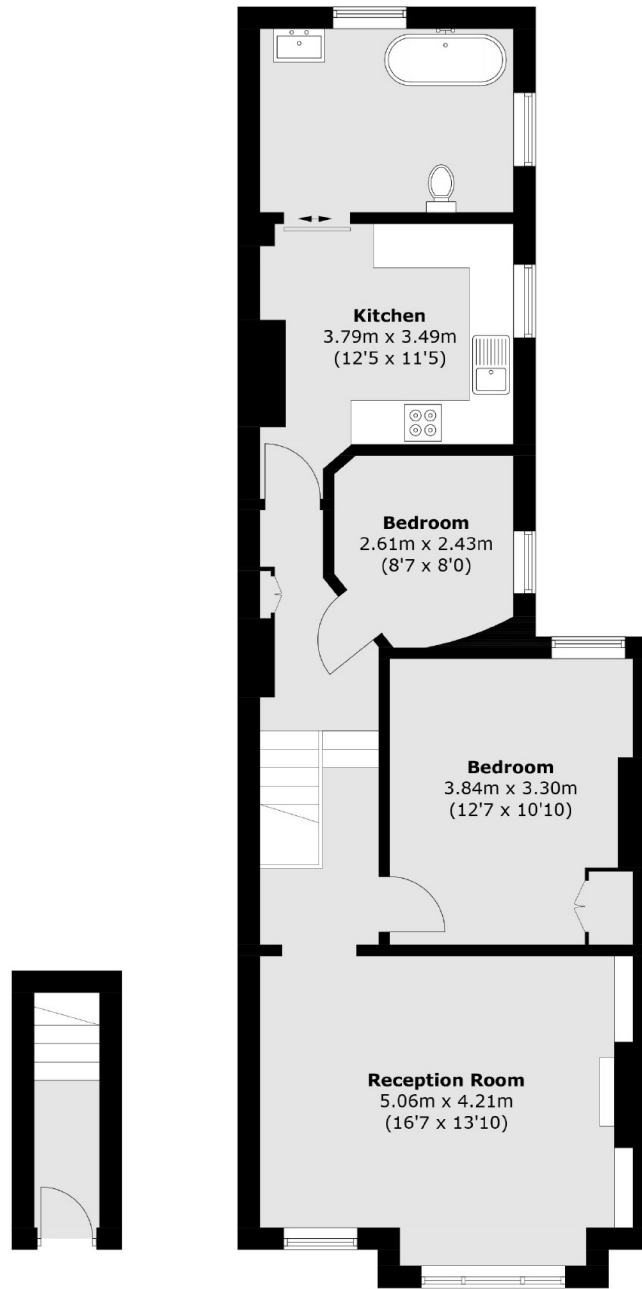
A two bedroom own front door flat in excellent condition throughout, boasting a spacious living room with high ceilings and a abundance of natural light and a separate kitchen. The flat offers the added benefit of being able to extend into the loft (STPP).

Located on one of Sands Ends premier roads the property is situated close to all of the amenities and transport links of the Wandsworth Bridge Road, Imperial Wharf and Fulham Broadway. The Thames Path is also within walking distance.

Features

- Private Entrance
- Two Bedrooms
- Potential To Extend (STPP)
- Spacious Living Room
- Large Modern Bathroom
- Underfloor Heating

Edenvale Street, London, SW6



Ground Floor

First Floor

Total area (approx.): 72.8 sq. m (783.6 sq. ft)