

## Cranbury Road, SW6

### £900,000

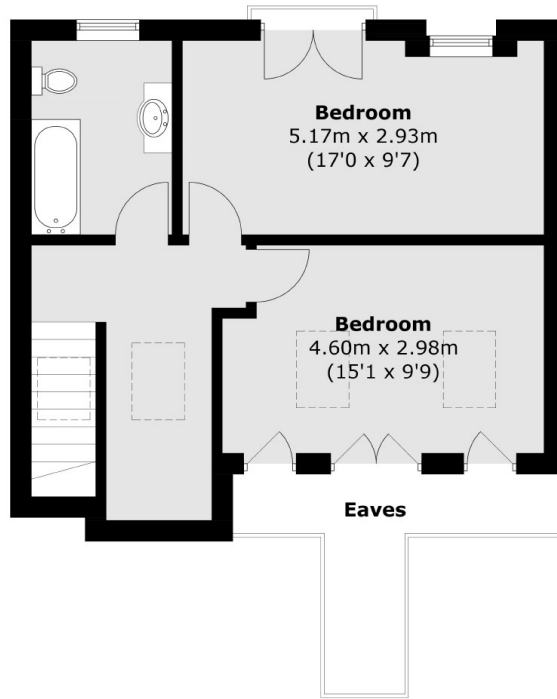
A split level four bedroom maisonette spanning over 1200 sq ft, located in the sought after 'bury triangle' which has been finished to a high standard throughout. The flat boasts an open plan kitchen living with a fully integrated kitchen and breakfast bar as well as two bathrooms.

Cranbury Road is a popular sought after street located in south Fulham. The property is within close proximity to the amenities and transport links of Parsons Green and Fulham Broadway. The famous Harbour Club and River Thames are only a short walk away.

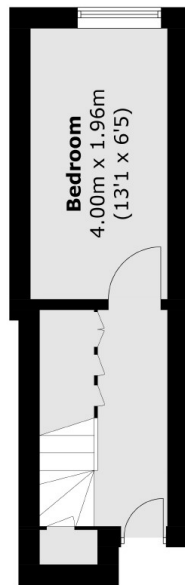
### Features

- Own Front Door
- Split Level Maisonette
- Share Of Freehold
- Two Bathrooms
- Open Plan Kitchen Living
- Bury Triangle

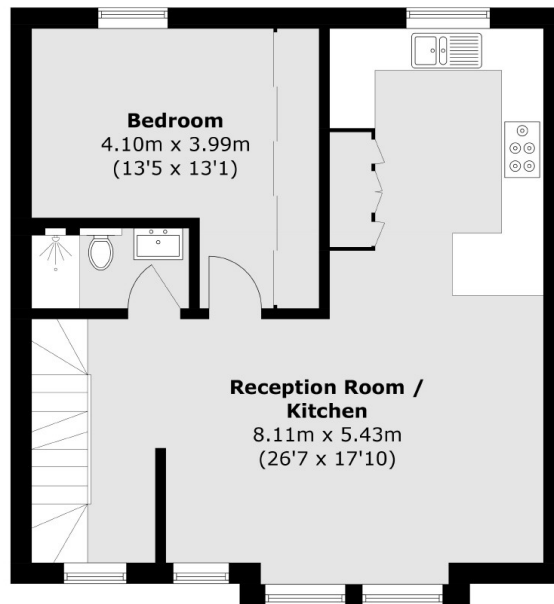
# Cranbury Road, London, SW6



**Second Floor**



**Raised Ground Floor**



**First Floor**

Total area (approx.): 116.6 sq. m (1,255.1 sq. ft)  
(Excluding Eaves)