



Estcourt Road, SW6

£1,250,000

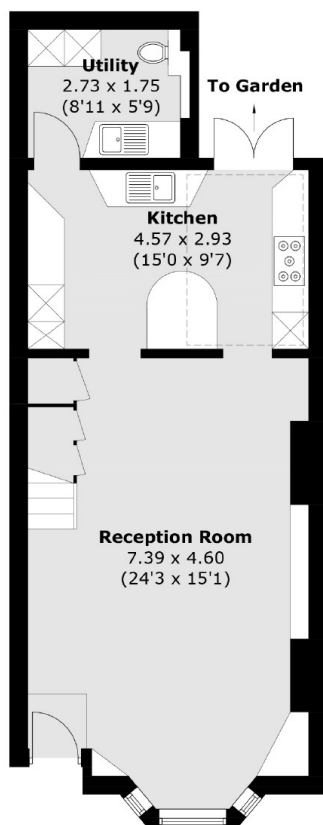
This beautifully finished four bedroom Victorian house offers bright and fantastically proportioned accommodation. The property provides an open plan reception/dining room with high ceilings, bay windows and a feature fireplace as well three bathrooms, an additional WC and two private terraces.

Estcourt Road is located moments away from the shops, bars and restaurants of Dawes Road and Fulham Broadway. The green space of Normand Park is only a short walk round the corner.

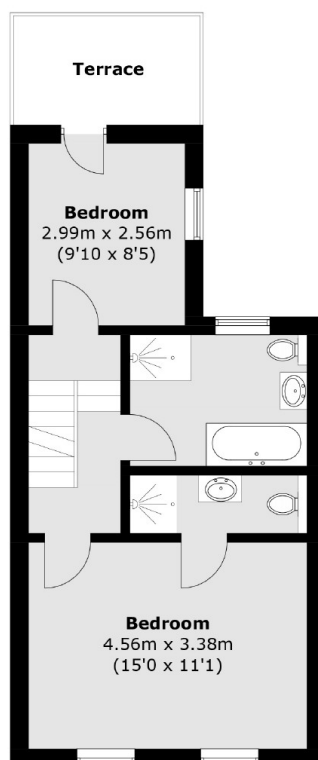
Features

- Freehold
- Four Bedrooms
- Three Bathrooms
- Private South Facing Terrace
- Additional WC
- No Onward Chain

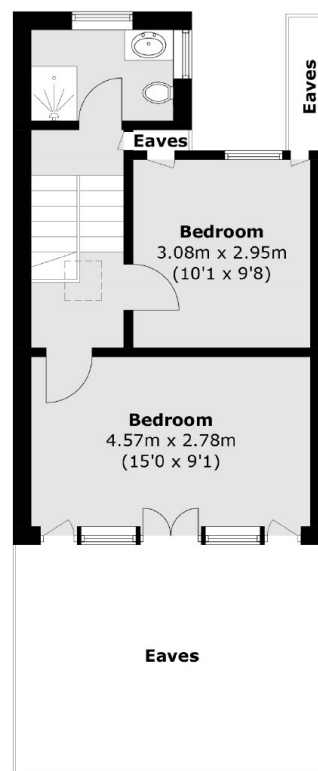
Estcourt Road, London, SW6



Ground Floor



First Floor



Second Floor

Total area (approx.): 123.8 sq. m (1,332.5 sq. ft)
(Excluding Eaves)
Terrace: 5.5 sq. m (59.2 sq. ft)