



Dawes Road, SW6

£1,038 Per week

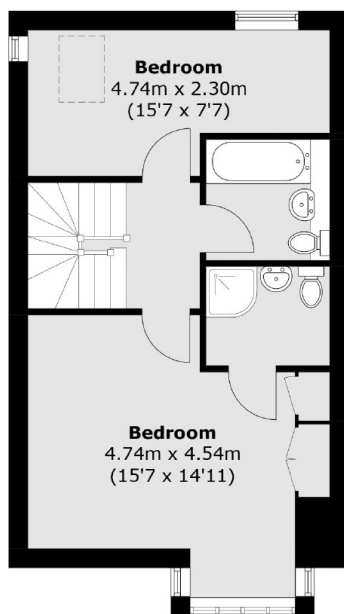
A spacious four bedroom, two bathroom house with an additional WC, Eat in kitchen and two reception rooms. This property also has a large private garden and off-street parking for one car.

The property is ideally located in the centre of Fulham. Parsons Green tube and Fulham Broadway tube are less than a mile away.

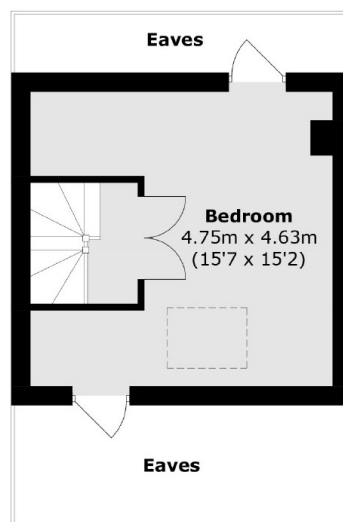
Features

- Four Double Bedrooms
- Large Garden
- Off-street Parking
- Full House
- Munster Village
- Fitted Kitchen

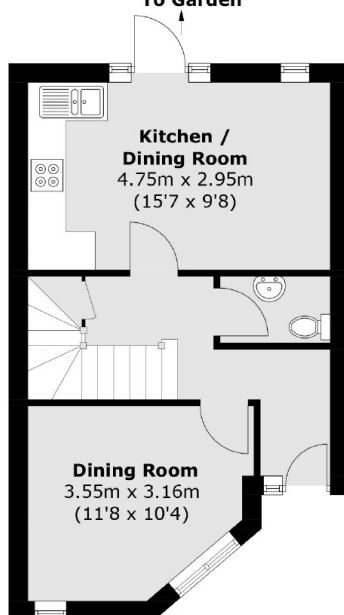
Dawes Road, London, SW6



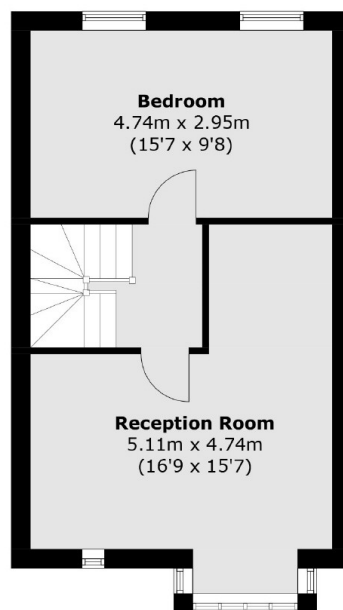
Second Floor
To Garden



Third Floor



Ground Floor



First Floor

Total area (approx.): 136.9 sq. m (1.473.6 sq. ft)
(Excluding Eaves)