



Peterborough Villas, SW6

£550,000

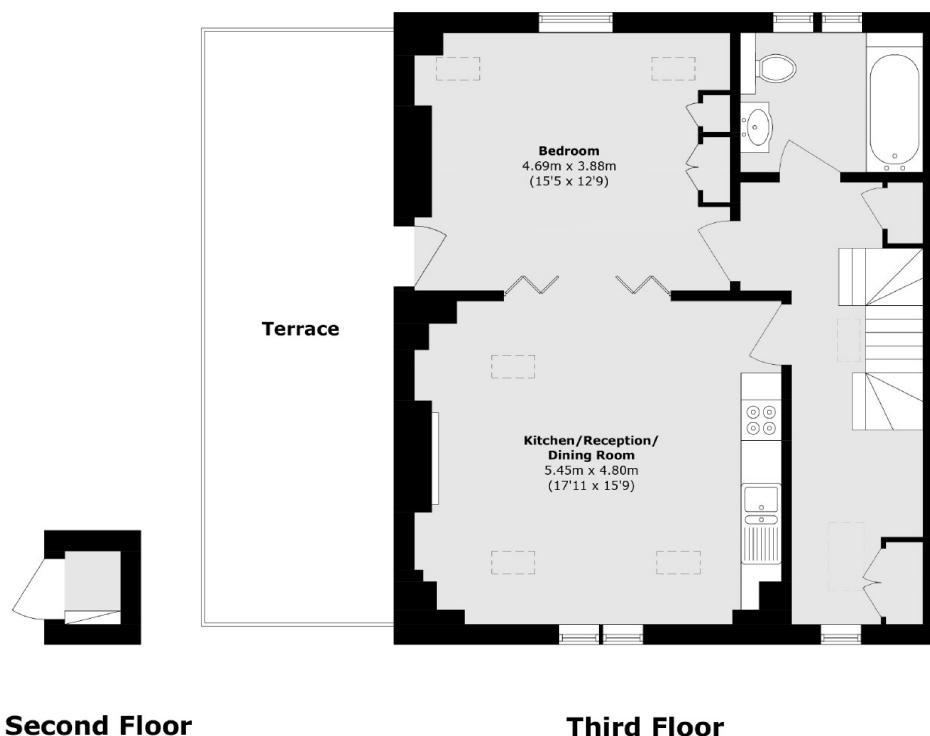
A charming and well located one double bedroom apartment situated on the top floor of this idyllic mansion block. The property offers generous proportions, spanning over 700 sq ft. It further benefits from high ceilings and a feature fireplace.

Situated at the end of a no through road, just off New King's Road, Peterborough Villas is just moments away from Eel Brook Common, Fulham Broadway and Parsons Green. A variety of boutique shops and restaurants is just a short walk away on The King's Road.

Features

Top Floor
Quiet Cul-De-Sac
Abundance Of Light
Over 700 Sq Ft
High Ceilings
Parsons Green

Peterborough Villas, London, SW6



Second Floor

Third Floor

Total area (approx.): 67.1 sq. m (722.2 sq. ft)
Terrace area (approx.): 24.6 sq. m (264.7 sq. ft)