

## Moore Park Road, SW6

£600 Per week

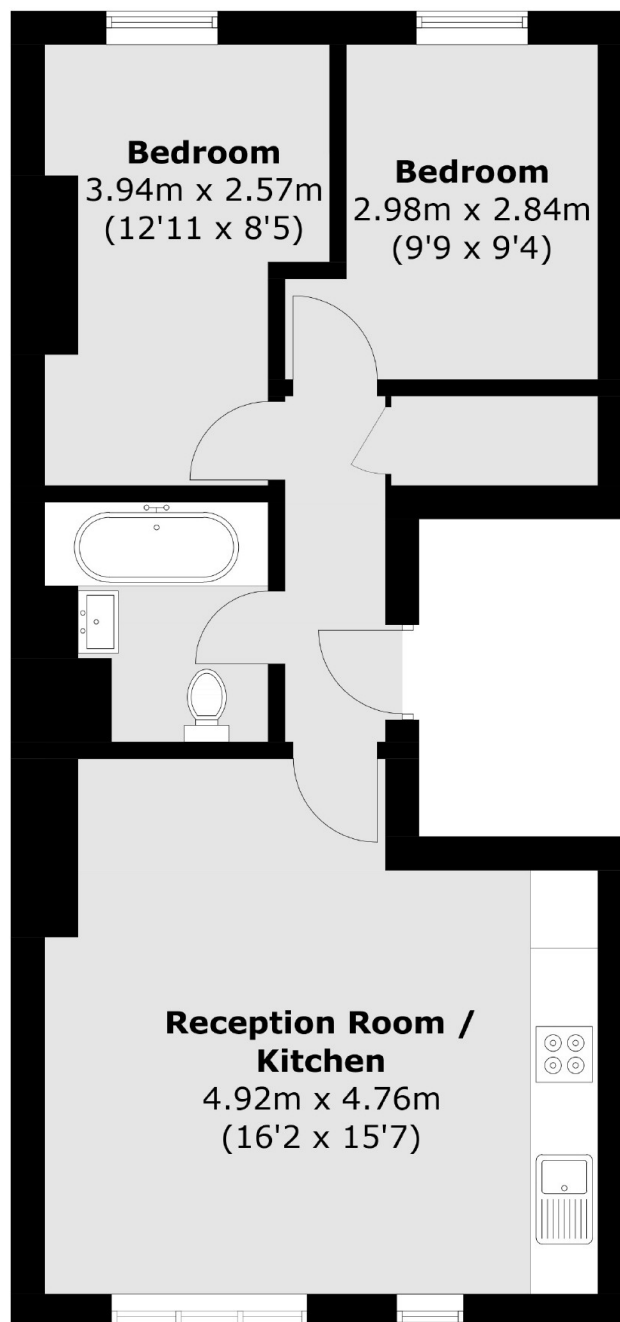
Within this beautiful Victorian terraced, situated on this prestigious street in the heart of Fulham is this bright apartment has a open plan kitchen/ reception, two double bedrooms and modern bathroom.

The property is ideally positioned on a quiet street just moments from Eel Brook Common, the many shops, bars and restaurants of Fulham Broadway and Fulham Broadway Underground Station.

### Features

- Two Double Bedrooms
- High Specification
- Modern Kitchen
- Bright Reception Room
- Wood Flooring
- Fulham Broadway

# Moore Park Road, London, SW6



Total area (approx.): 49.0 sq. m (527.4 sq. ft)

## Dexters

Fulham  
569 Fulham Road  
London  
SW6 1ES  
Lettings  
020 7386 7386

Energy Rating: E. We aim to make our particulars both accurate and reliable. However they are not guaranteed; nor do they form part of an offer or contract. If you require clarification on any points then please contact us, especially if you're traveling some distance to view. Please note that appliances and heating systems have not been tested and therefore no warranties can be given as to their good working order.

 **RICS** | Regulated  
Estate Agent  
and Letting Agent

[dexters.co.uk](https://www.dexters.co.uk)