



Lillie Road, SW6

£750 Per week

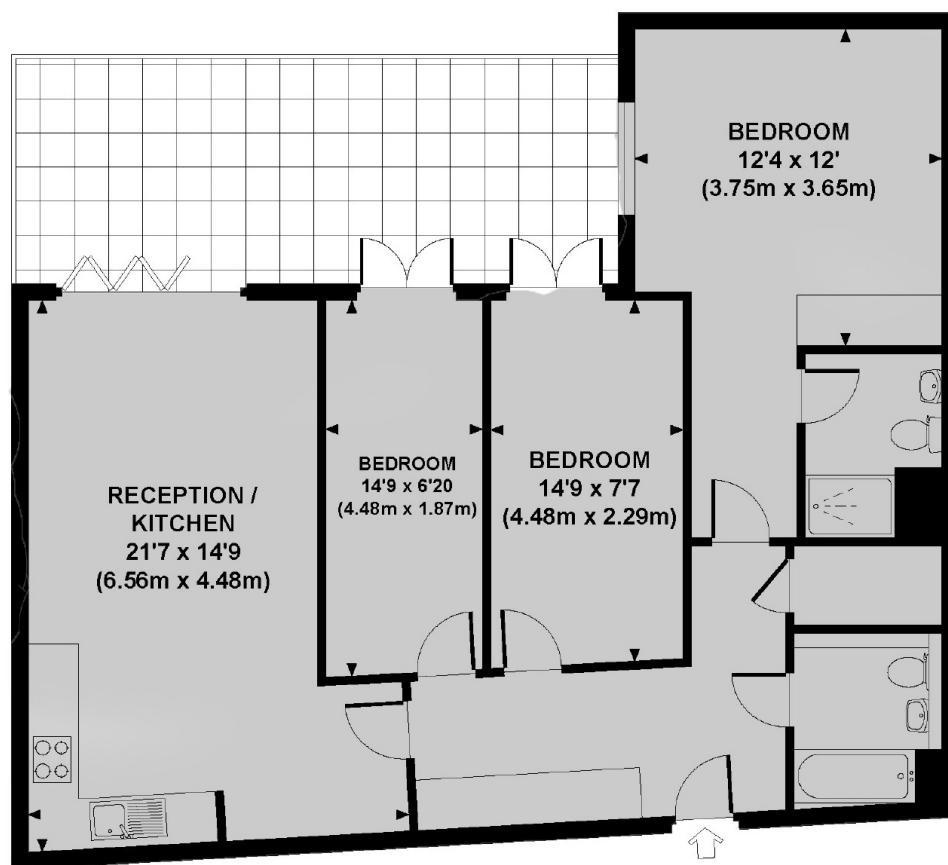
An attractive first floor three double bedroom apartment set in a newly refurbished building. The property has been finished to a high standard throughout.

The apartment is close to the amenities of Old Brompton Road and Lillie Road with West Brompton Station close by.

Features

- Modern Development
- High Specification
- Three Bedrooms
- Two Bathrooms
- Open Plan Reception
- West Brompton Station

Lillie Road, London, SW6



FIRST FLOOR

ARIANA APARTMENTS, NORTH END ROAD, SW6

Approx. gross internal area
883 Sq Ft. / 82.0 Sq M.

Dexters

Fulham
569 Fulham Road
London
SW6 1ES
Lettings
020 7386 7386

Energy Rating: B. We aim to make our particulars both accurate and reliable. However they are not guaranteed; nor do they form part of an offer or contract. If you require clarification on any points then please contact us, especially if you're traveling some distance to view. Please note that appliances and heating systems have not been tested and therefore no warranties can be given as to their good working order.

 **RICS** | Regulated
Estate Agent
and Letting Agent

dexters.co.uk