

North End Road, SW6

£761 Per week

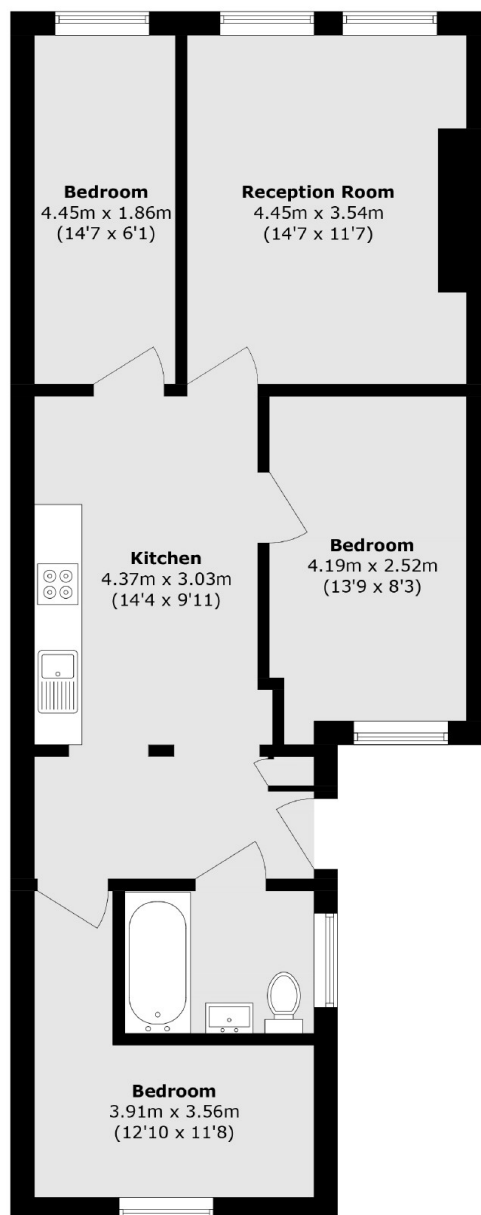
This property is a spacious, four bedroom apartment with an open plan kitchen - living room. It benefits from wooden flooring throughout the communal areas.

North End Road is a popular location with a great selection of local amenities. It is walking distance to Fulham Broadway and West Brompton stations and within easy walking distance of Parsons Green.

Features

- Four Bedrooms
- Wooden Flooring
- Open Plan
- Close to Amenities
- Furnished

North End Road, London, SW6



Total area (approx.): 69.6 sq. m (749.1 sq. ft)