



Carnwath Road, SW6

£657 Per week

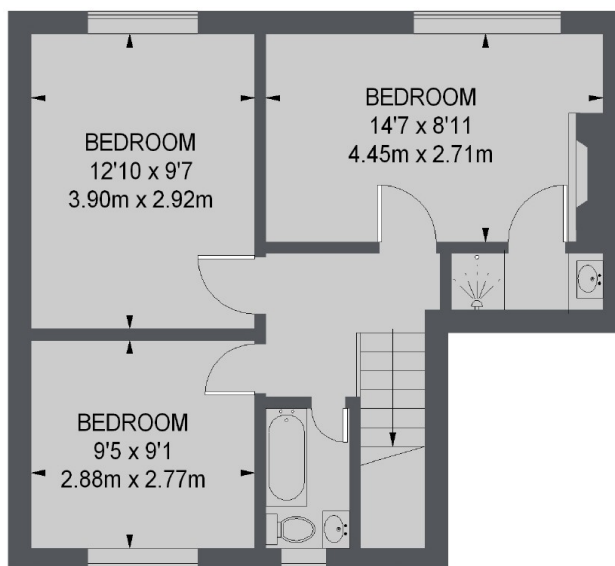
A well presented and spacious apartment located in the popular Sands End area of Fulham. The property offers four double bedrooms, separate kitchen, large reception room, wooden flooring and two bathrooms.

An ideal location with the River Thames adjacent and the amenities of Wandsworth Bridge Road close by.

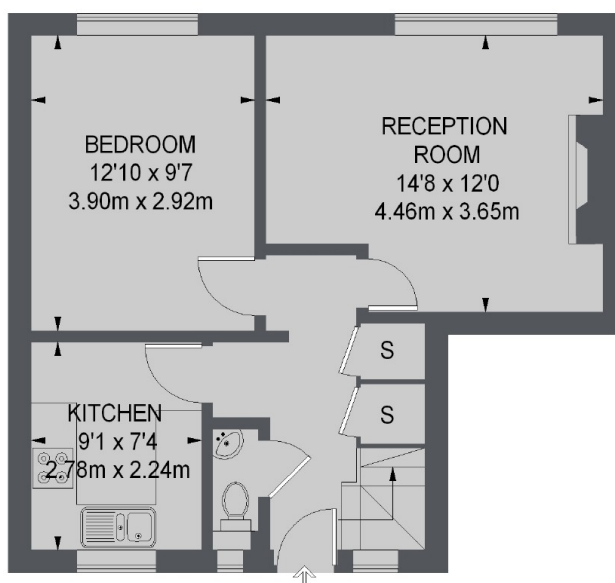
Features

- Split Level
- Wooden Flooring
- Bright and Spacious
- Four Double Bedrooms
- River Thames
- Wandsworth Bridge Road

Carnwath Road, London, SW6



FIRST FLOOR



GROUND FLOOR

TOTAL APPROX. FLOOR AREA
948 SQ. FT. (88.1 SQ. M.)