



Fulham Palace Road, SW6

£634 Per week

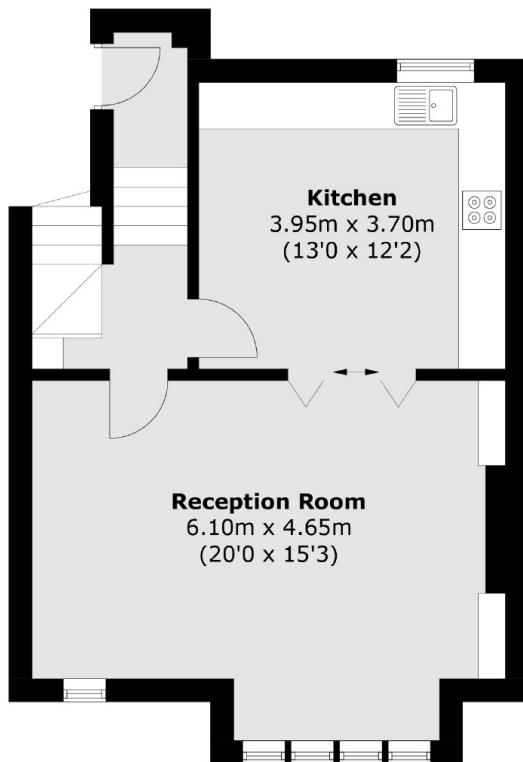
This spacious two double bedroom split level apartment has been beautifully finished and has a stunning eat-in kitchen with integrated appliances and double doors leading onto the large light and airy reception room, There are also two bathrooms.

Located close to Bishsops Park, the River Thames and Fulham High Street conveniently offering good local amenities, there are good bus routes close by and Putney Bridge underground station is within walking distance.

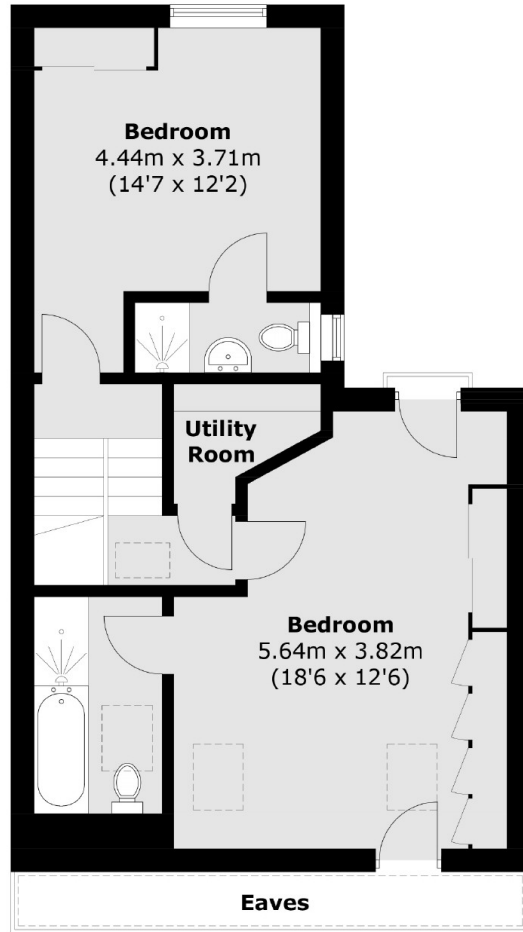
Features

- Spacious Split Level Apartment
- Stunning Eat-In Kitchen
- Large Reception Room
- Two Double Bedrooms
- Two Modern Bathrooms
- Period Conversion

Fulham Palace Road, London, SW6



First Floor



Second Floor

Total area (approx.): 100.5 sq. m (1,081.8 sq. ft)
(Excluding Eaves)