



Bridgewater Avenue, SW6

£1,700,000

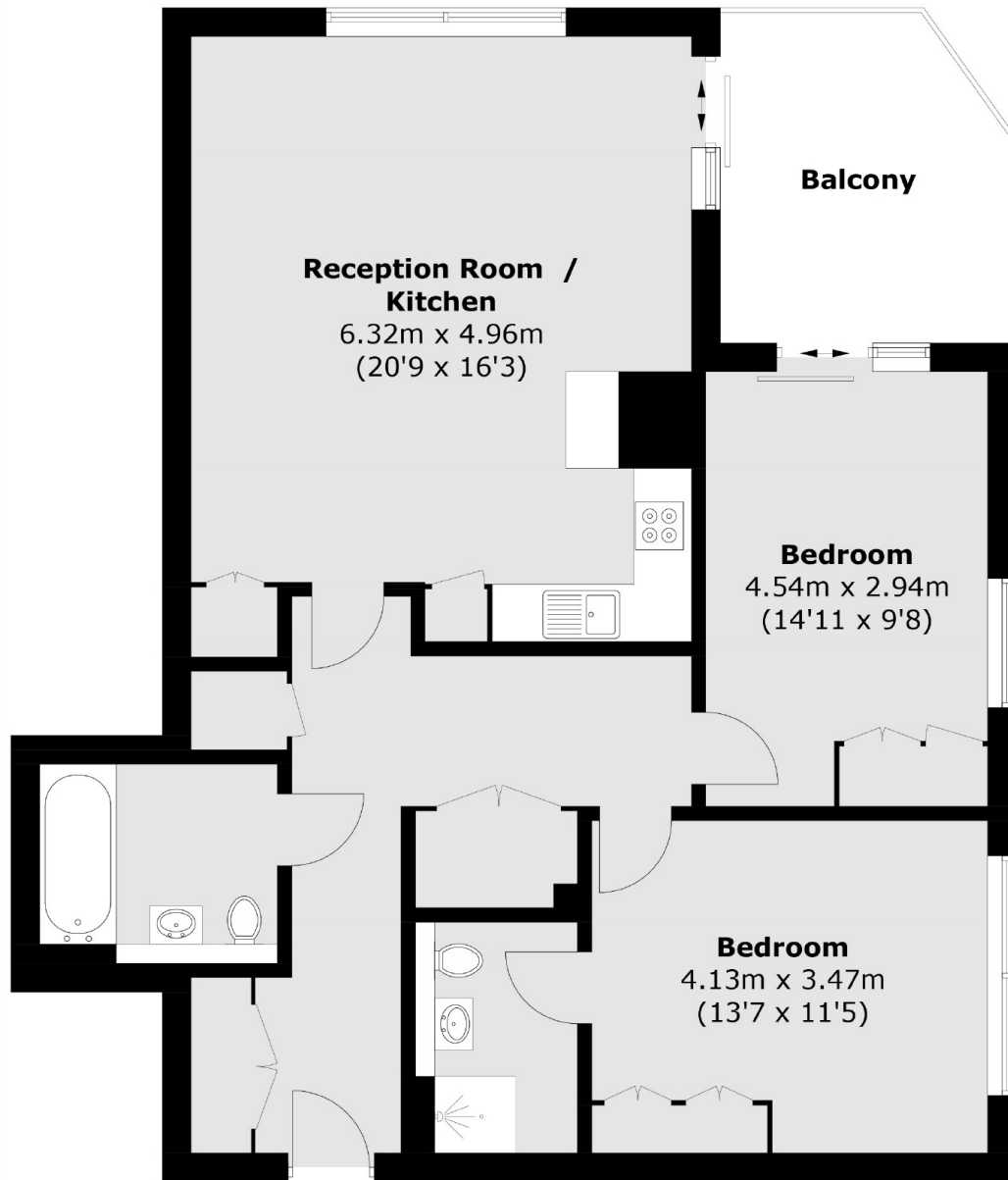
A two double bedroom apartment situated on the seventh floor within the exclusive Kings Tower located within the prestigious Chelsea Creek. The property has an open plan kitchen living room, with panoramic views across London and the River Thames.

The Kings Tower residence will have access to the Halcyon Club which will offer a thirty first floor sky lounge and terrace with enviable views towards the city, residents cinema, business lounge & private meeting rooms, 24-hour concierge and a fitness centre offering an indoor pool, sauna & steam room as well as a gymnasium.

Features

- Two Double Bedrooms
- 24 Hour Concierge
- Gym and Spa Facilities
- Panoramic Views of London
- Open Plan Kitchen Living Room
- Air Conditioning Throughout

Bridgewater Avenue, London, SW6



Twelfth Floor

Total area (approx.): 89.8 sq. m (966.6 sq. ft)

Balcony area: 9.9 sq. m (106.5 sq. ft)

Dexters

Fulham
569 Fulham Road
London
SW6 1ES
Sales
020 7386 5386

Energy Rating: B. We aim to make our particulars both accurate and reliable. However they are not guaranteed; nor do they form part of an offer or contract. If you require clarification on any points then please contact us, especially if you're traveling some distance to view. Please note that appliances and heating systems have not been tested and therefore no warranties can be given as to their good working order.

 **RICS** | Regulated
Estate Agent
and Letting Agent

dexters.co.uk