



## Broughton Road, SW6

### £750,000

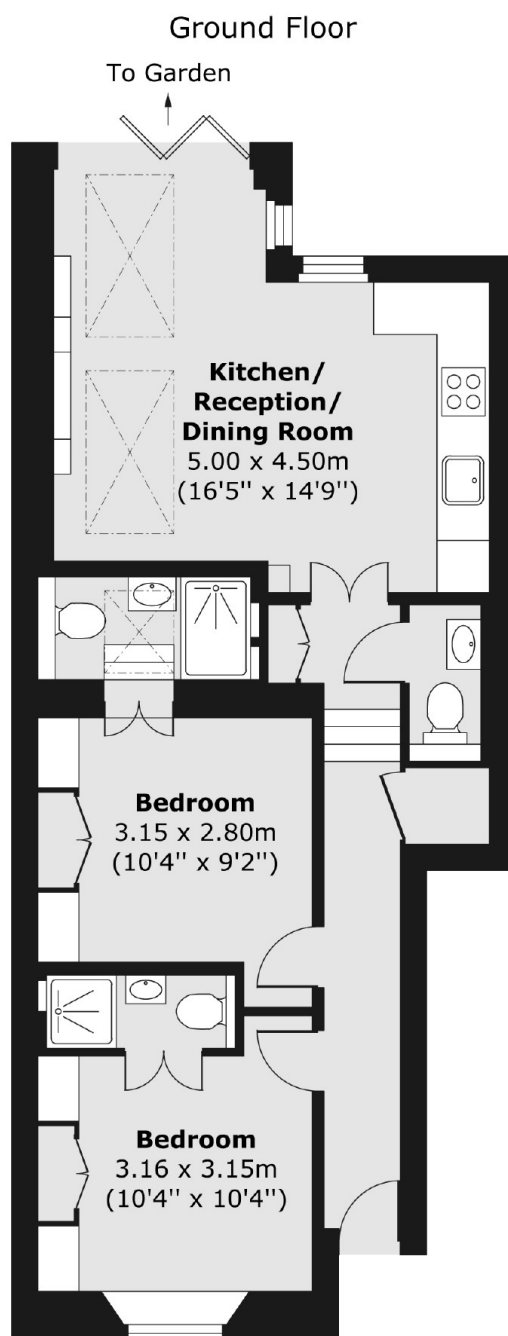
An immaculately refurbished two double bedroom, two bathroom ground floor garden flat in Sands End. The property has an open plan kitchen living room, own front door and bi-fold doors which open onto private outdoor space.

Located at the top of Sands End, the property is within close proximity to Parsons Green and Fulham Broadway. The green spaces of both Eel Brook Common and Bishops Park are only a short walk away.

### Features

- Two Double Bedrooms
- Immaculately Finished
- Open Plan Kitchen/Living Room
- Two Bathrooms
- Own Front Door
- Private Garden

# Broughton Road, London, SW6



Total area (approx.) 57.10 sq. m (615 sq. ft)