



Fulham Palace Road, SW6

£550,000

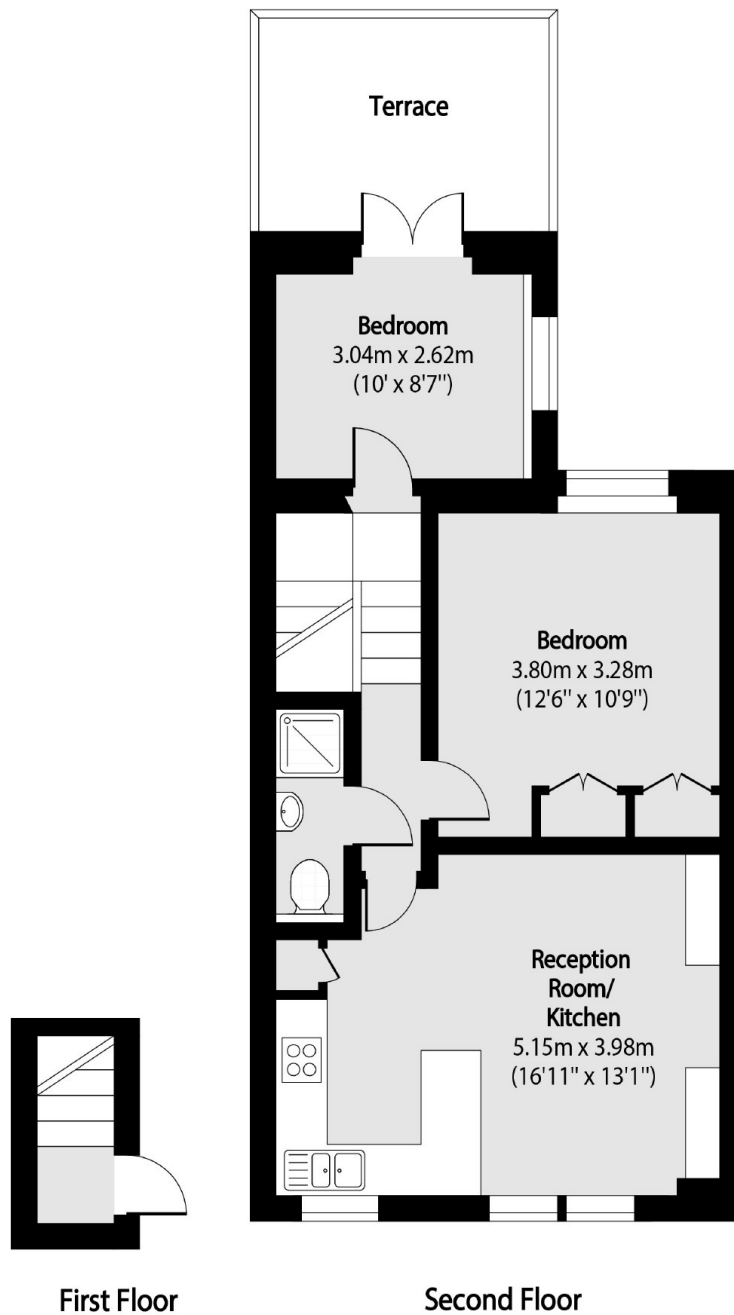
A well configured two double bedroom Victorian conversion flat located on the top floor with direct views over Bishops Park. The property has an open plan kitchen/living area and boasts a private roof terrace.

Enviably located directly in front of Bishops Park and the River Thames, the flat is within close proximity to Putney Bridge and Parsons Green.

Features

- Two Double Bedrooms
- Top Floor
- Open Plan Kitchen Living
- Private Roof Terrace
- Well Finished
- Bishops Park

Fulham Palace Road, London, SW6



Total area (approx): 51.61 sq m (556 sq. ft)

Terrace total area (approx): 8.45 sq m (91 sq. ft)

Dexters

Fulham
569 Fulham Road
London
SW6 1ES
Sales
020 7386 5386

Energy Rating: D. We aim to make our particulars both accurate and reliable. However they are not guaranteed; nor do they form part of an offer or contract. If you require clarification on any points then please contact us, especially if you're traveling some distance to view. Please note that appliances and heating systems have not been tested and therefore no warranties can be given as to their good working order.

 **RICS** | Regulated
Estate Agent
and Letting Agent

dexters.co.uk